



National Transportation Safety Board



Investigator-in-Charge Overview

Accident

DHC-2 (Beaver)



- Pilot fatal
- 4 passengers fatal

DHC-3 (Otter)



- Pilot minor injury
- 9 passengers with serious injury
- 1 passenger fatal

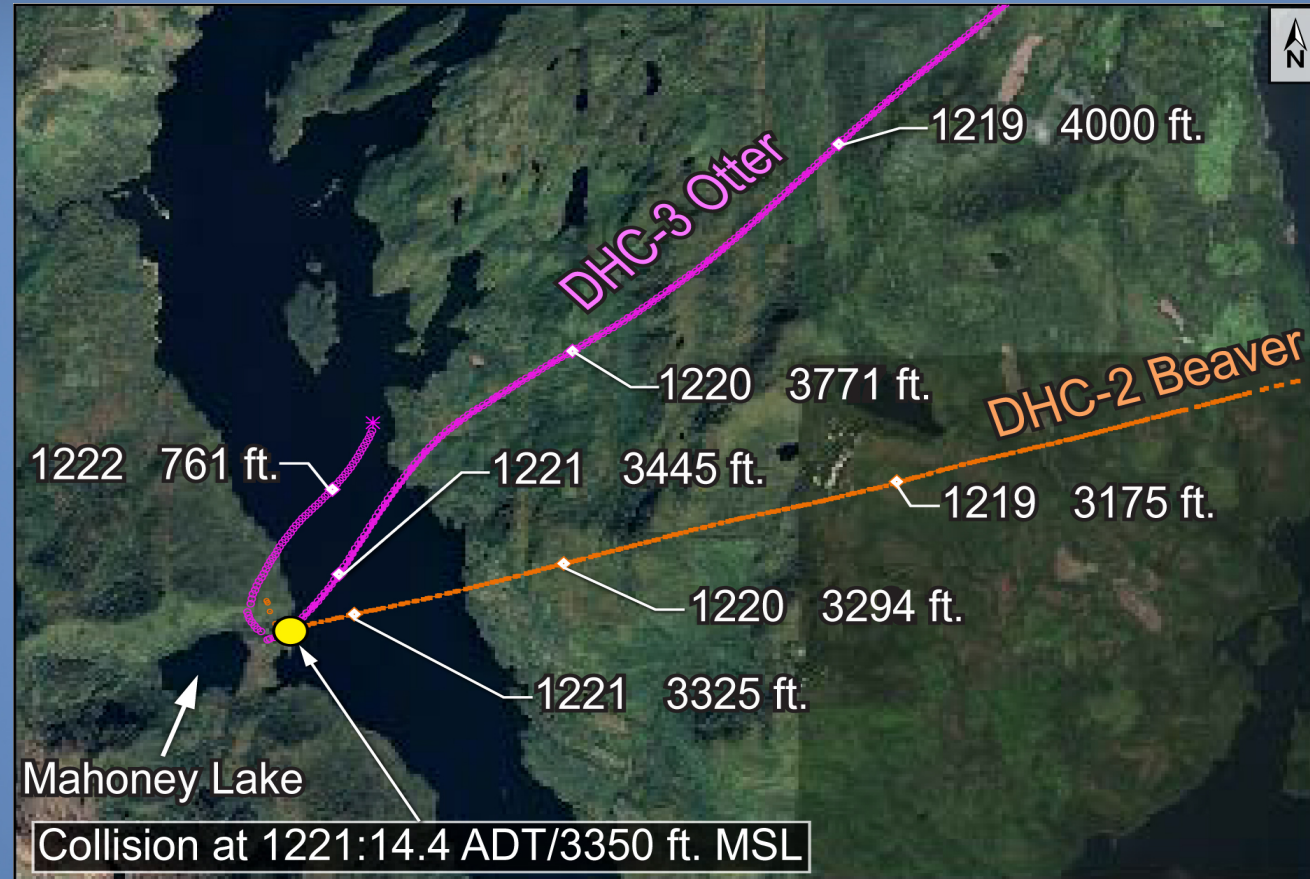
Initial Information

- Both flights were conducting on-demand Part 135 sightseeing flights
- Misty Fjords National Monument to Ketchikan
- Converging on a scenic waterfall (Mahoney Lake)
- Midair collision at an altitude of 3,350 ft

Flight Paths



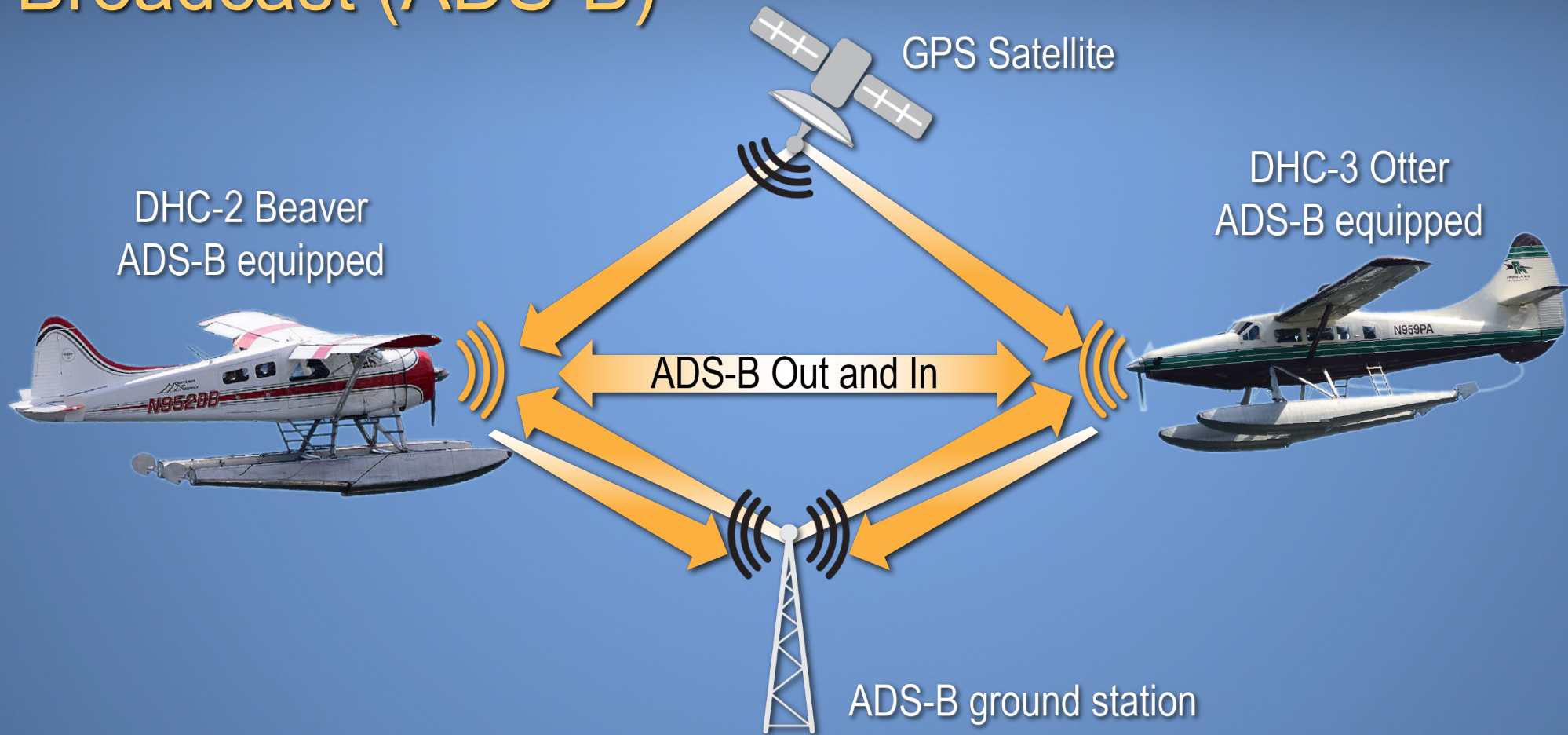
Flight Paths



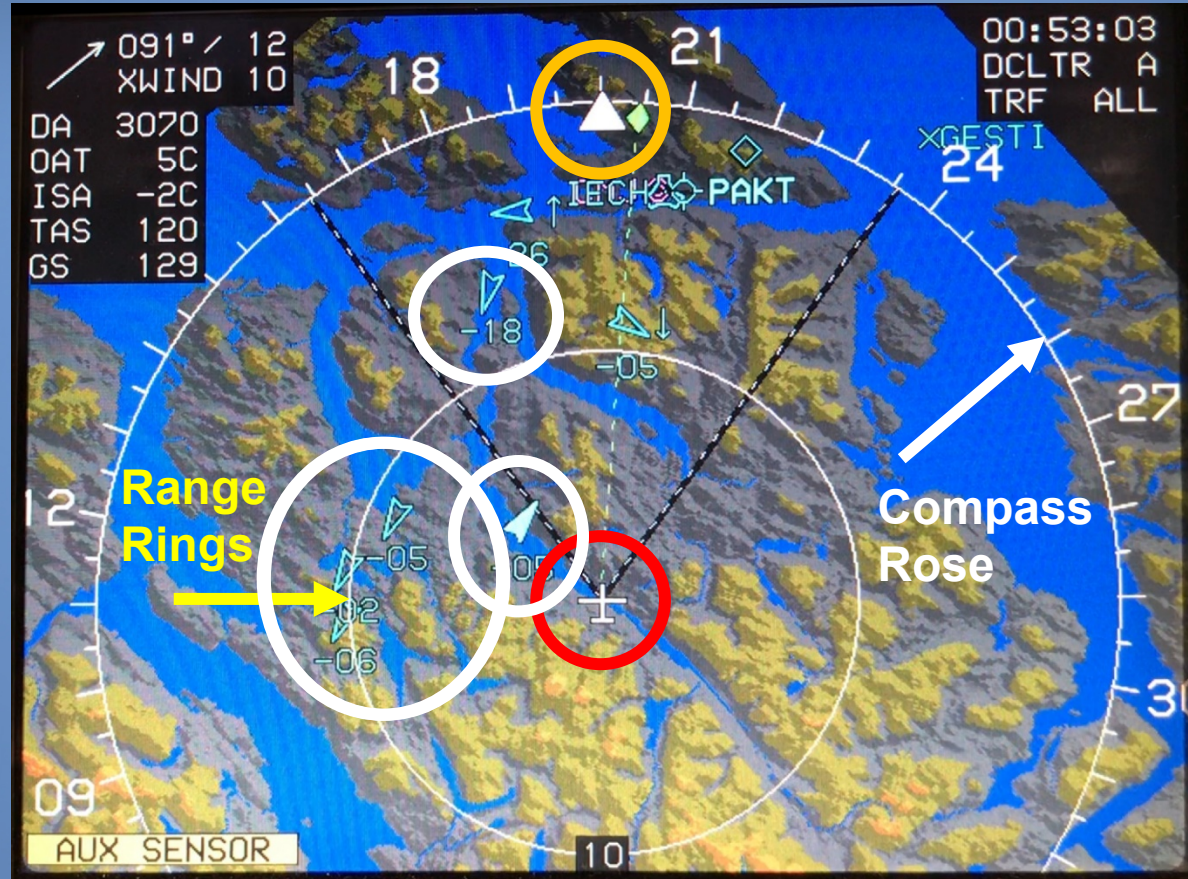
Animation

- Overview of Flight Tracks
- Exterior and Interior View of Airplanes

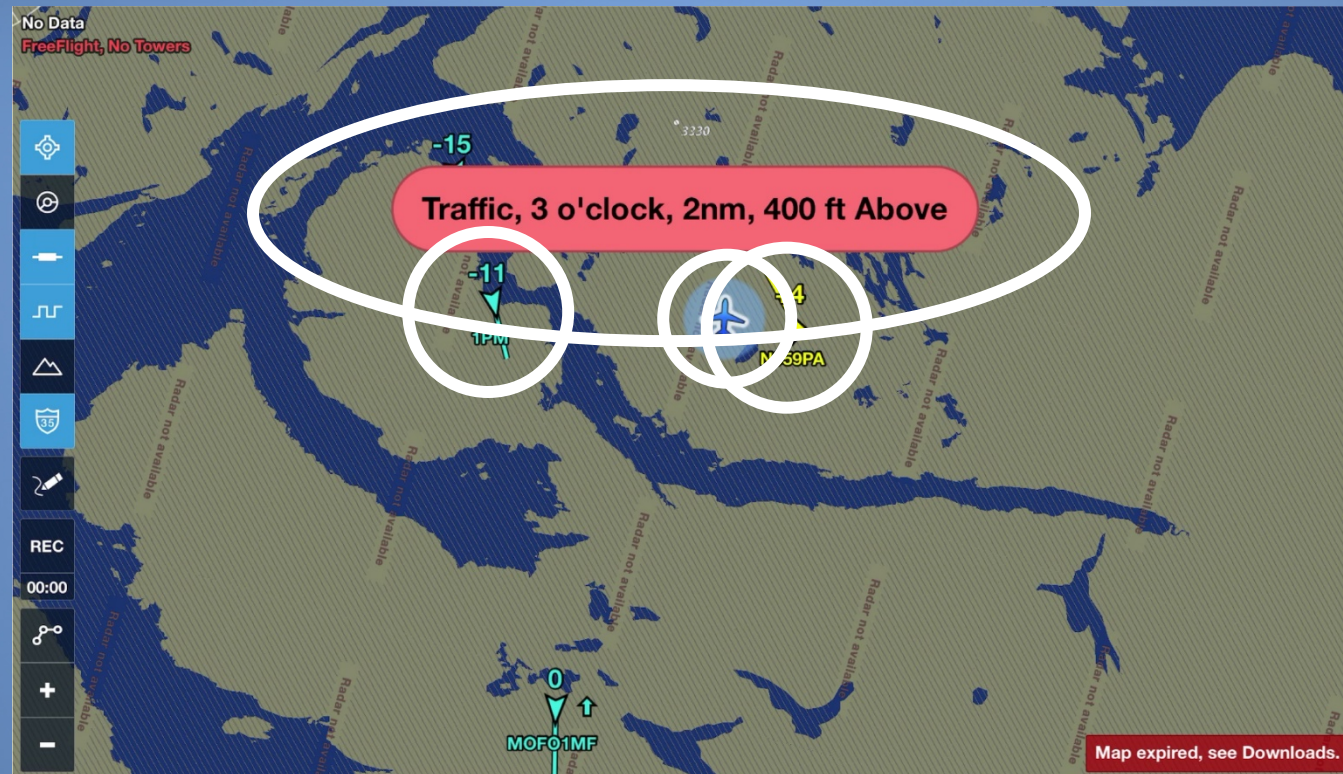
Automatic Dependent Surveillance – Broadcast (ADS-B)



Chelton FlightLogic Display (DHC-3 Otter)



Apple iPad with ForeFlight (DHC-2 Beaver)



Animation – Simulated Cockpit Displays of Traffic Information

- DHC-3 Otter - Chelton FlightLogic display
- DHC-2 Beaver - ForeFlight on Apple iPad

Exclusions

- Pilot qualifications
- Pilot medical conditions
- Malfunction or failure with either airplane

Safety Issues

- Inherent limitations of the see-and-avoid concept
- Safety benefits of ADS-B Out and In-supported traffic advisory systems
- Lack of ADS-B In requirement for Part 135 operations
- Lack of CDTI alerting on both airplanes
- Loss of alerting capabilities on Capstone aircraft
- Inadequate checklist in Taquan Air's operation
- Lack of a requirement for Safety Management Systems



National Transportation Safety Board