



NTSB National Transportation Safety Board

Office of Highway Safety

Opening Statement

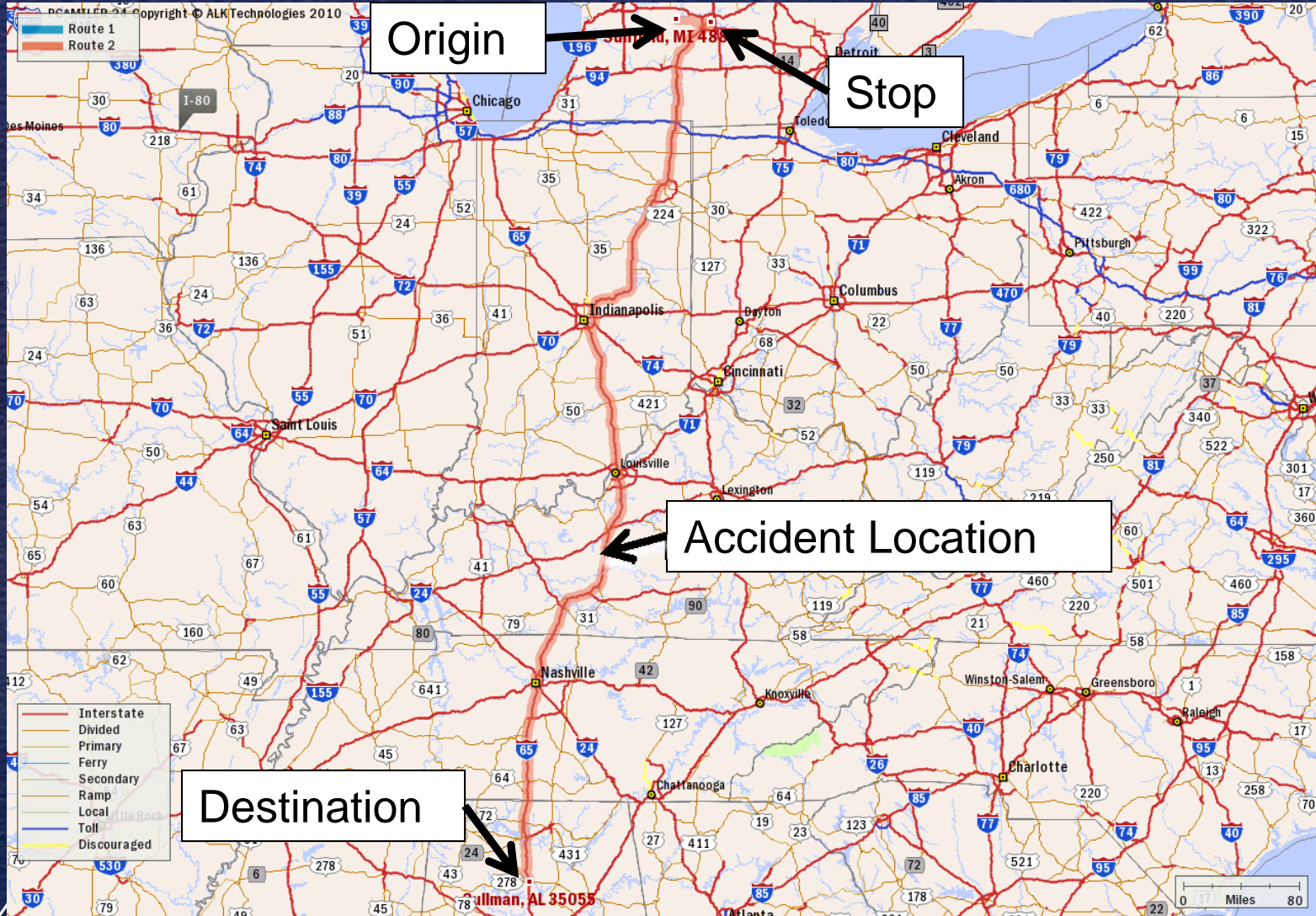
Peter Kotowski

Investigator-In-Charge

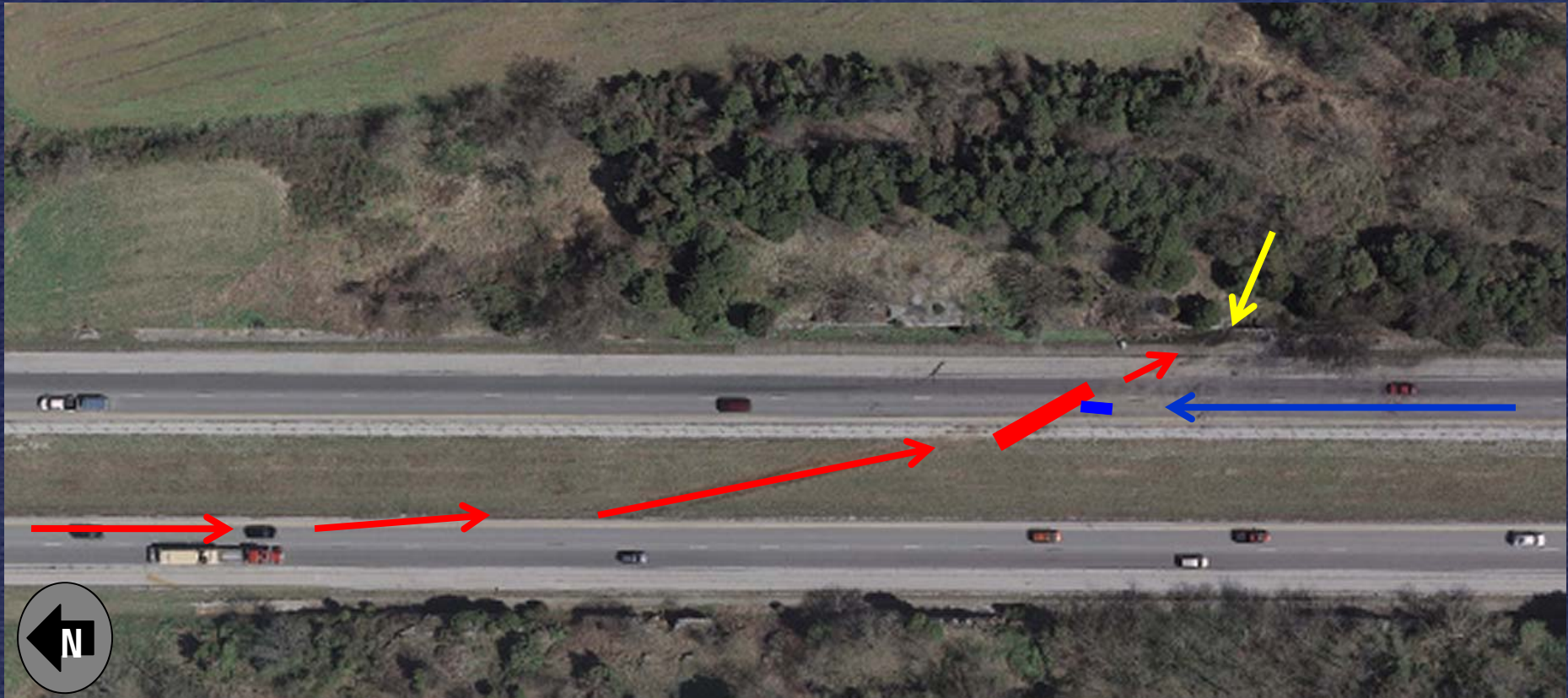
Introduction

- Accident description
- Accident animation
- Safety issues
- Investigative/support staff
- Parties to the investigation
- Presentations

Accident Trip



Accident Description



Accident Description



Accident Animation

- Accident sequence
- Initial speed near posted limit of 70 mph
- Postcollision simulation limited to physical evidence of impacts and a general reconstruction of postcollision vehicle trajectories

Accident Animation

Combination vehicle
traveling southbound

15-passenger van
traveling northbound

Impact and subsequent
vehicle movement



Injuries

- Results of the accident
 - 11 fatalities
 - 2 injured, minor; children in child restraints

Safety Issues

- Cell phone usage by commercial motor vehicle drivers
- Seat belt usage in 15-passenger vans
- Objective median barrier warrants
- Chameleon carriers
- FMCSA New Entrant Program

On-Scene Investigative Staff

Vice Chairman Chris Hart – Member on Scene

Harkey Mayo – Vice Chairman's Special Assistant

David Rayburn – Highway Factors

Dennis Collins – Human Performance Factors

Jim LeBerte (ret.) – Motor Carrier Operations

Ron Kaminski – Survival Factors

Chris Voeglie – Recorders

Debi Hall – Transportation Disaster Assistance

John Whitener – Information Office

Pete Kotowski – Investigator-in-Charge

Report Development Staff

Deb Bruce – Project Manager

Gary Van Etten – Motor Carrier Operations

Steve Prouty – Vehicle Factors

Shane Lack – Computer Simulation

Alice Park – Computer Animation

Christy Spangler – Computer Animation

Julie Perrot – Safety Recommendations

Ivan Cheung – Statistical Analysis

Elisa Braver – Statistical Analysis

Gwynne O' Reagan – Editor

Avis Clark – Audio/Visual

Parties to the Investigation

Kentucky State Police

Kentucky Transportation Cabinet

Hart County Emergency Management

Federal Motor Carrier Safety
Administration (FMCSA)

Federal Highway Administration (FHWA)

TRW Automotive

Gibraltar Cable Barrier Systems

Hester, Inc.



NTSB