



National Transportation Safety Board

Biloxi, Mississippi

March 7, 2017

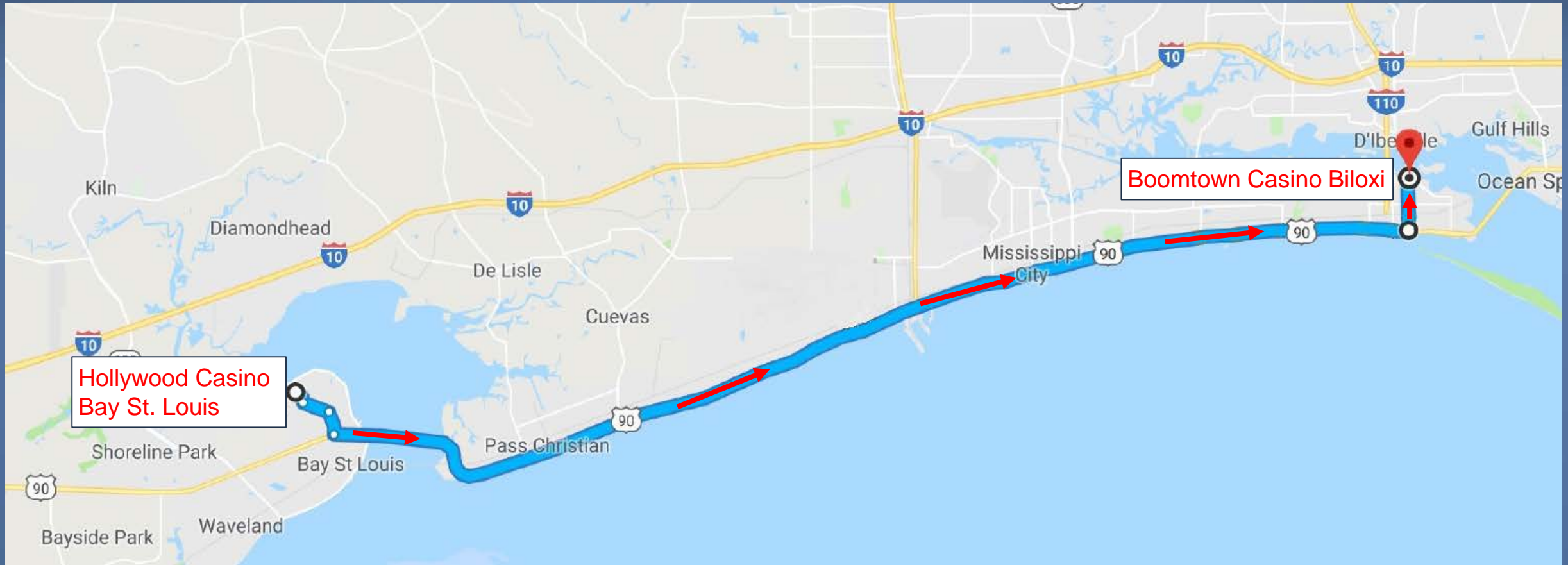
Pete Kotowski, IIC

Biloxi, Mississippi

- 2016 Van Hool
 - 60-year-old driver
 - 49 passengers
 - ECHO Transportation
- CSX Freight Train
 - 3 locomotives, 52 cars
 - 49-year-old engineer
 - 37-year-old conductor

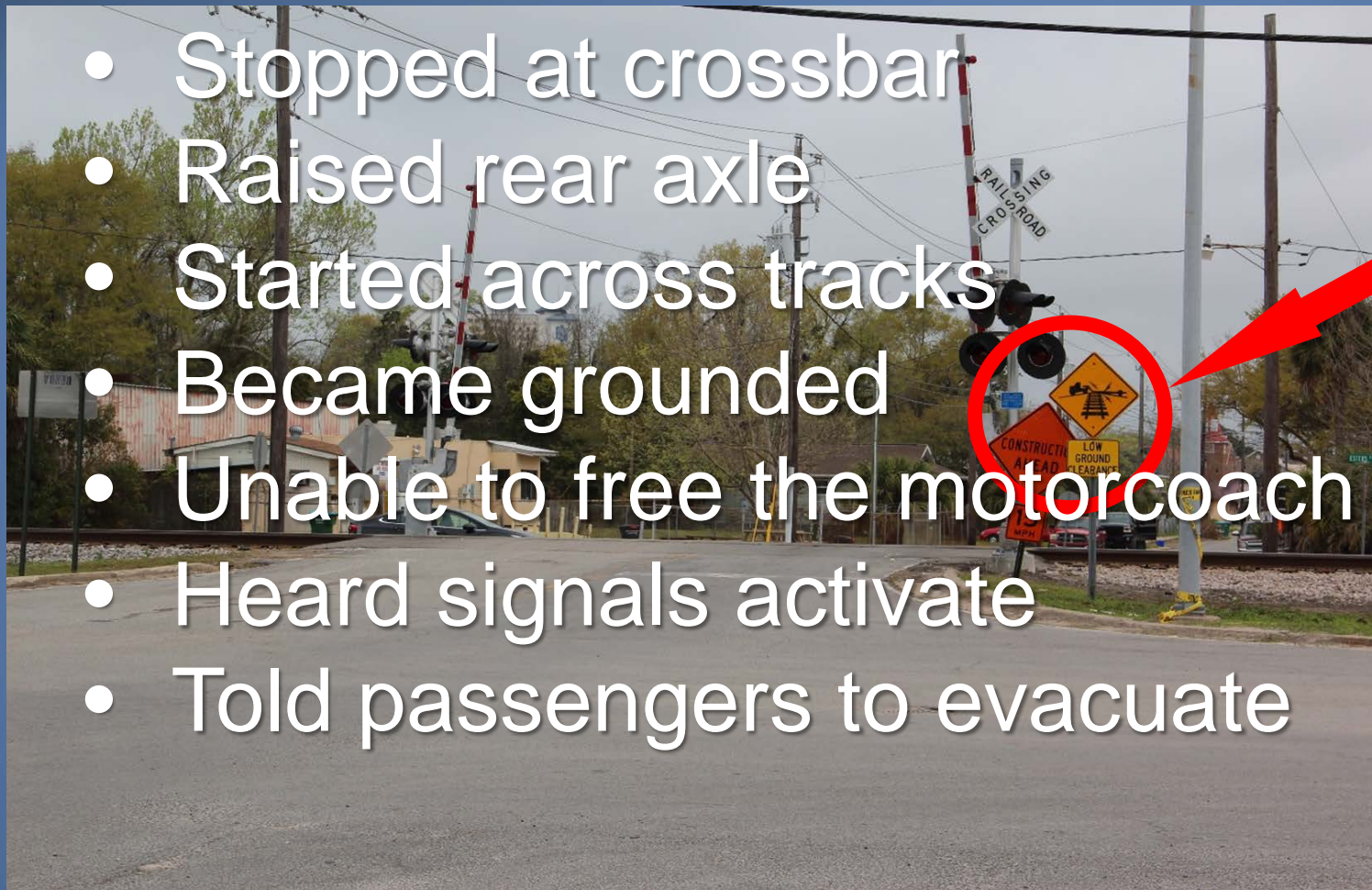


Crash Trip

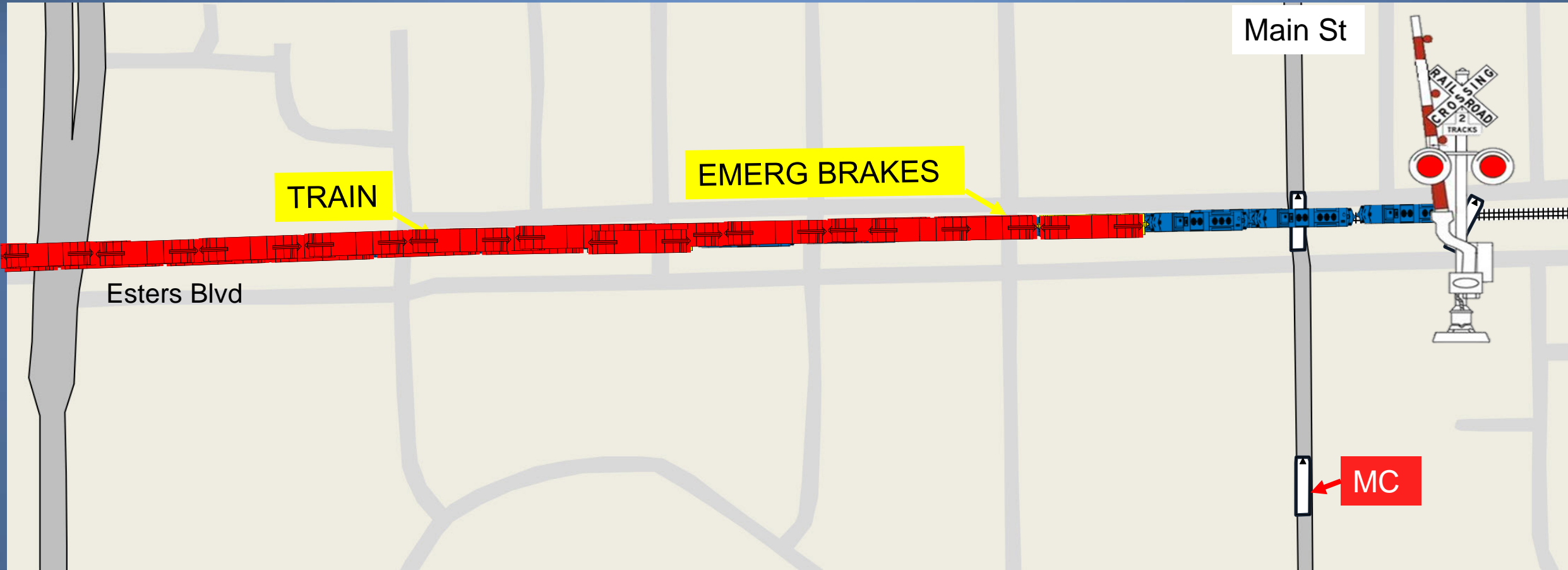


Crash Location

- Stopped at crossbar
- Raised rear axle
- Started across tracks
- Became grounded
- Unable to free the motorcoach
- Heard signals activate
- Told passengers to evacuate



Crash Sequence



Train Horn



Train Approach



Scene Photos



Injury Information

- Fatalities
 - 4 motorcoach passengers
- Serious injuries
 - 21 motorcoach passengers
 - 1 motorcoach driver
- Minor injuries
 - 16 motorcoach passengers
- None
 - 8 motorcoach passengers
 - 2 train crew members

On-Scene Staff

- Pete Kotowski IIC
- Steven Prouty Highway Factors
- Sheryl Harley Survival Factors
- Michele Beckjord Survival Factors
- Dennis Collins Human Performance
- Michael LaPonte Motor Carrier Factors
- Brian Bragonier Vehicle Factors
- Tim DePaepe Rail Signals

On-Scene Staff

- Tomas Torres
- Jane Foster
- Elias Kontanis, PhD
- Steve Blackistone
- Peter Knudson
- Pummy Bawa
- James Anderson

Rail Operations
Recorders Specialist
Chief, TDA
Government Affairs
Media Relations
Computer Support
AV Specialist

Report Development Staff

- Ensar Becic, PhD Project Manager
- Gwynne O'Reagan Editor
- Julie Perrot Safety Recommendations
- Michael Hamilton Safety Recommendations

Parties to Investigation

- Biloxi Police Department
- Federal Motor Carrier Safety Administration
- Federal Railroad Administration
- Biloxi Department of Engineering
- CSX Transportation
- TBL Group – ECHO Tours & Charters
- ABC Bus c/o Van Hool
- Federal Highway Administration, Office of Infrastructure Research & Development (Turner-Fairbank Laboratory)
- Mississippi Department of Transportation Rails Division

Exclusions

- Motorcoach driver, engineer, and conductor
 - Properly licensed and medically qualified
 - Not distracted by cell phone use
 - No substance impairment or medical conditions
- Mechanical condition of the motorcoach
- Railroad signal system operation

Safety Issues

- High-profile grade crossings
 - Signage and reconstruction guidelines
 - Coordination of maintenance activities and monitoring of safety risk



Safety Issues

Emergency egress and extrication

