



National Transportation Safety Board

Descent Below Visual Glidepath and Impact With Seawall

Asiana Flight 214, B777
San Francisco, CA
July 6, 2013

Investigator-in-Charge

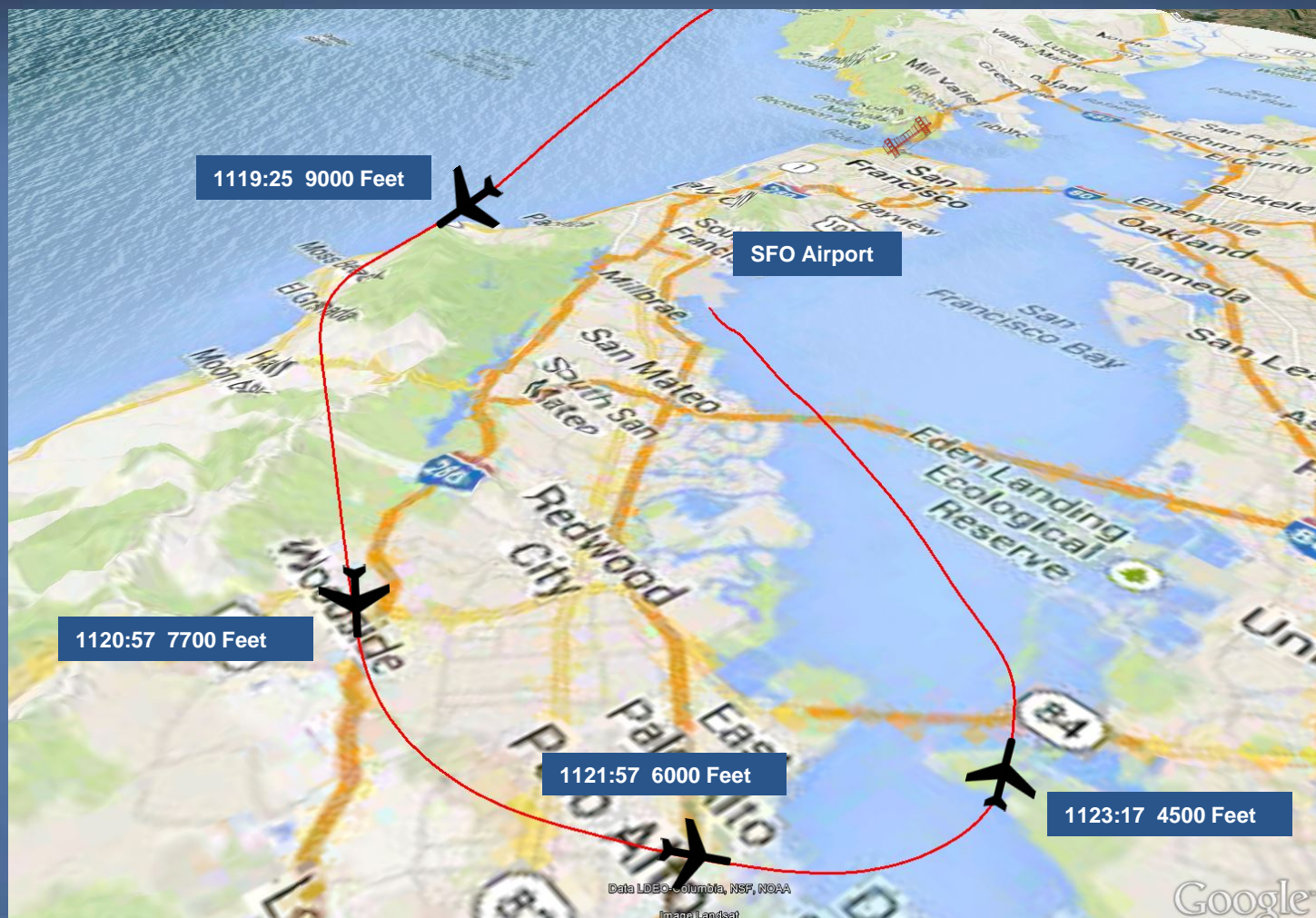


Basic Information

- Airplane destroyed
- 3 fatalities, 49 serious injuries
- Scheduled flight
- Departed Seoul, Korea
- Full go-team
- Investigative hearing



Arrival Information



Pilot Roles and Experience

- Pilot flying – left seat
 - Transitioning from A320
 - 9,700 hours total time, 33 hours B777
- Pilot monitoring – right seat
 - New instructor on B777
 - 12,000 hours total time, 3,200 hours B777
- Observer in jumpseat
 - Relief first officer

Flight Mode Annunciator

Mode Control Panel

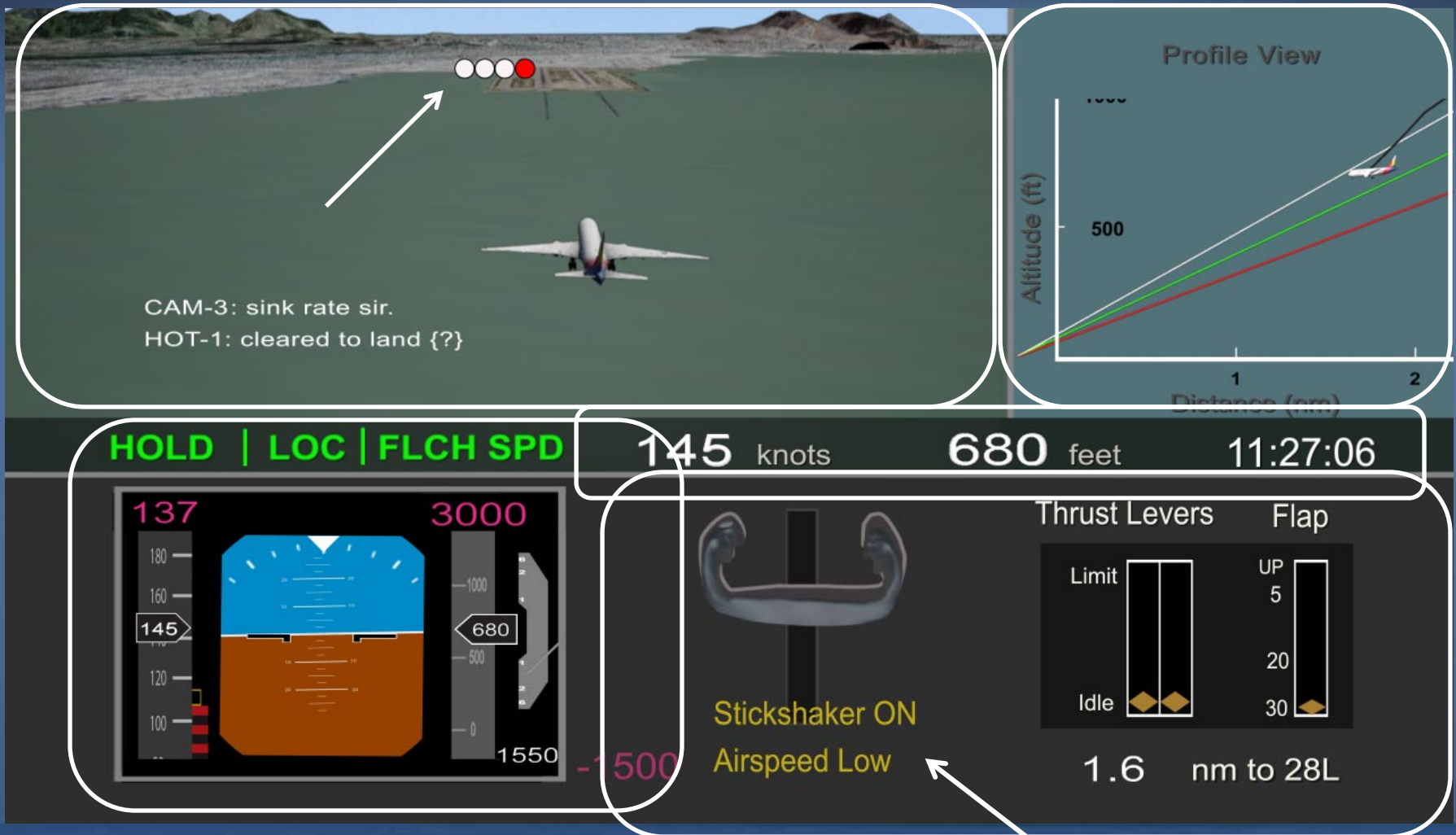


Primary Flight Display

Disconnect Switches

Photos are for orientation purposes only and do not reflect the exact status of the accident airplane.

Animation Items



Transition to Animation/Video

Evacuation and Injuries



Emergency Response



Safety Issues

- Flightpath management
- Adherence to standard operating procedures
- Flight crew monitoring
- Flight instructor operating experience proficiency
- Manual flight proficiency
- Understanding of autothrottle system logic

Safety Issues

- B777 autoflight system airspeed control
- Appropriate use of flight directors
- Low energy alerting systems
- Injury potential from lateral forces
- Slide/raft certification standards
- ARFF training and staffing
- San Francisco Airport emergency procedures

Parties to the Investigation

- Federal Aviation Administration
- Boeing
- Pratt & Whitney
- Honeywell
- San Francisco Fire Department
- Air Cruisers Company

Annex 13 Participants

- Korean Aviation and Railway Accident Investigation Board
- Asiana Airlines
- Korean Office of Civil Aviation





National Transportation Safety Board