



National Transportation Safety Board

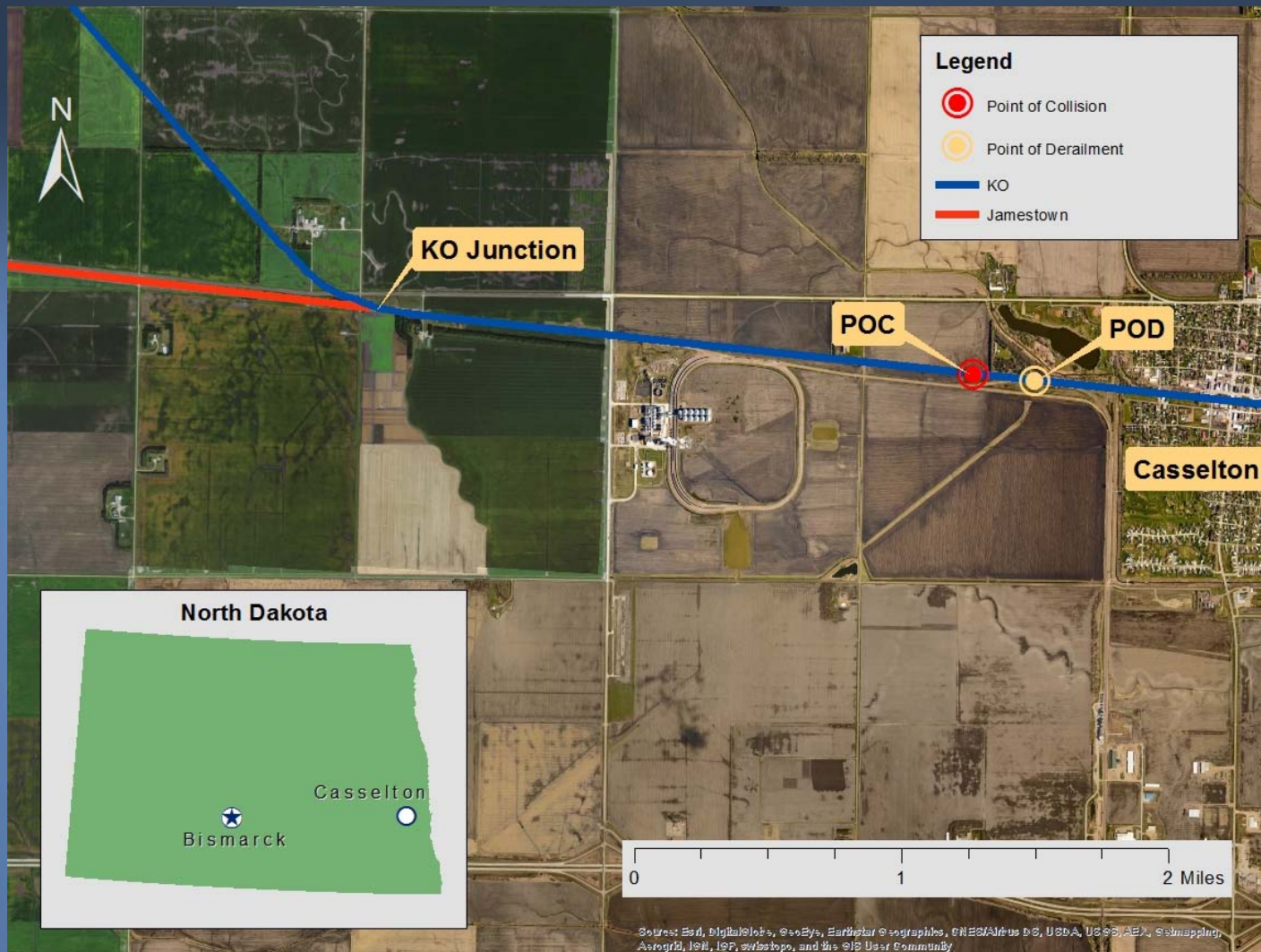
BNSF Railway Train Derailment and Subsequent Train
Collision, Release of Hazardous Materials and Fire
Casselton, North Dakota
December 30, 2013

R. A. Hipskind, Investigator-in-Charge



Photograph by Dawn Faught





Grain Train and Crude Oil Train Videos



Grain Train Locomotive 6990



Crude Oil Train Locomotive 4934

Derailement Sequence

- At 2:10 pm grain train derailed at MP 28.5
- Grain train went into emergency braking
- Derailed grain car fouled adjacent main track 2
- Crude oil train passed head end of grain train
- Signal maintainer notified grain train of damage to switch heater covers
- Car on track became visible to crude oil train
- Oil train crew placed train in emergency braking and collided with derailed grain car at 2:11pm and derailed







Research and Engineering Support

- Dr. William Tuccio
- Dr. Erik Mueller
- Dr. Kevin Renze
- Dr. Xiaohu Liu
- Dr. Mary Pat McKay
- Alice Park
- Eric Emery
- Nancy McAtee

Additional Support

- Ben Allen
- Eric Weiss
- John Whitener
- Christy Spangler
- Erik Grosof
- Meg Athey
- Don Eick
- Michael Hamilton

Parties to the Investigation

- Federal Railroad Administration
- BNSF Railway
- Brotherhood of Locomotive Engineers and Trainmen
- International Sheet Metal, Air, Rail and Transportation Workers
- Standard Steel
- Trinity Rail Car

Safety Issues

- Nondestructive testing requirements specifically designed to locate internal material defects in secondhand axles
- Train crew safety and their proximity to cars loaded with hazardous materials



National Transportation Safety Board