



Enhancing Pedestrian Safety Through Design and Countermeasures

NTSB Pedestrian Safety Forum
May 10, 2016 | Washington, D.C.
Scott Kubly, Seattle Department of
Transportation

Rainier Ave - before



Rainier Ave - after



Rainier Ave - after



What people are saying

"Our neighborhood feels more connected (not divided by speeding traffic)."

"The area feels much safer now and I'm more comfortable making turns."

Lifestyle trumps affordability in central Seattle, even for some budget-stretchers

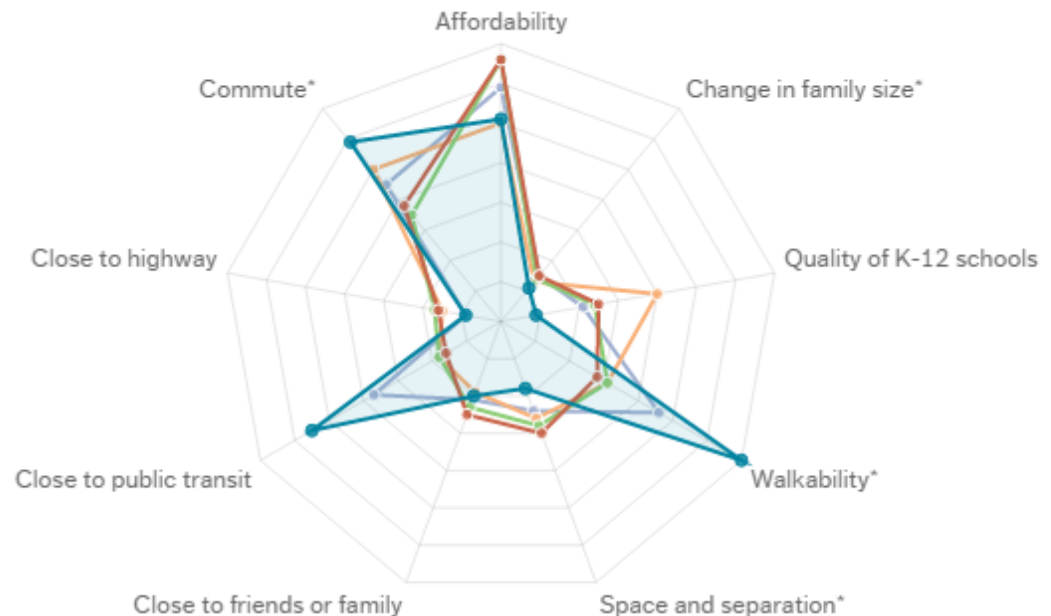
Originally published May 11, 2015 at 7:33 pm | Updated May 13, 2015 at 10:39 am

Seattle or suburbs: Why do we choose to live where we do?

Survey data shows walkability beats affordability as the top priority for residents of central Seattle neighborhoods, in contrast with other parts of the region.

GRAPH LEGEND

- Remainder of Seattle
- Eastside
- South King County
- Snohomish
- Central Seattle



2nd Ave - before



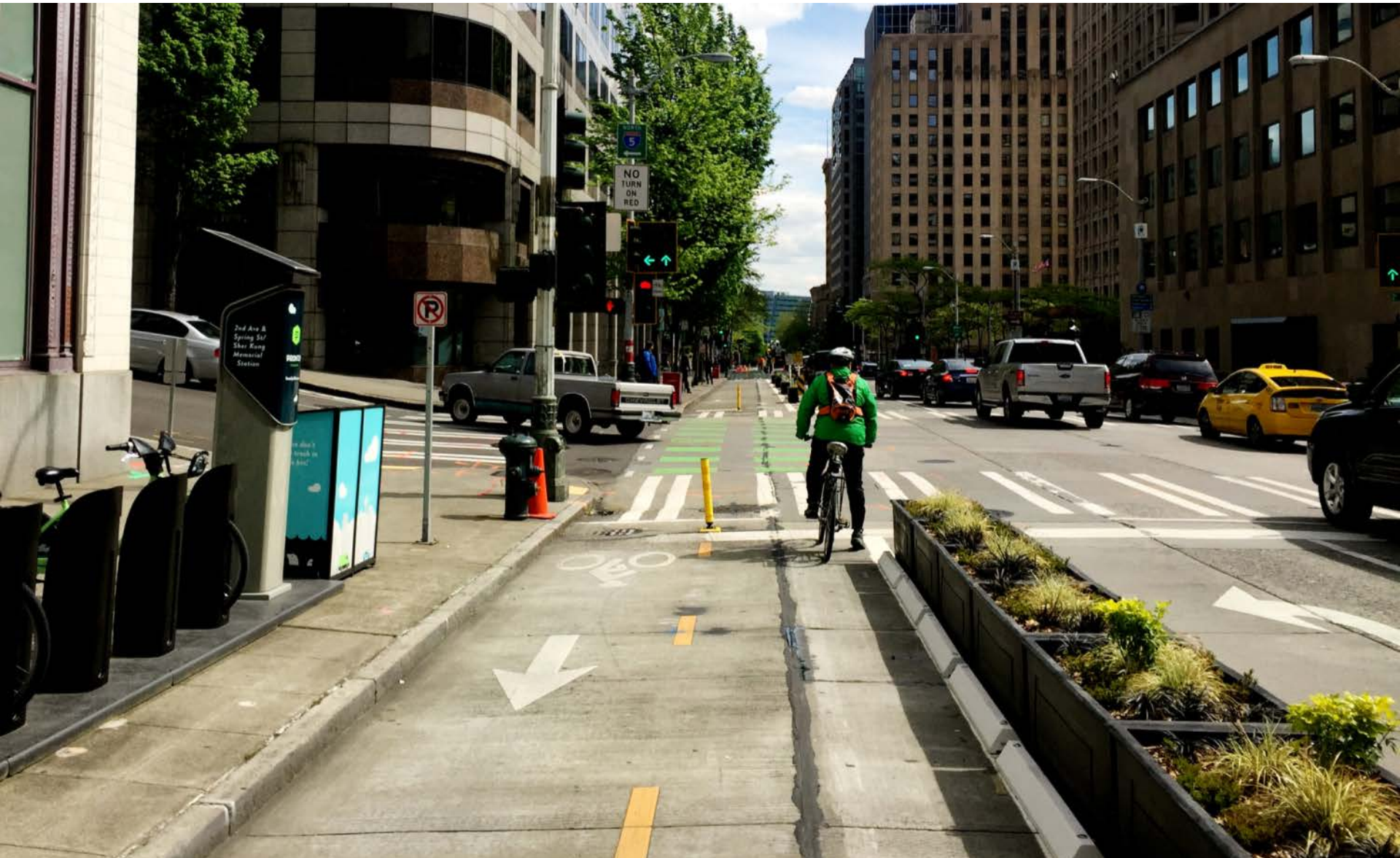
2nd Ave - after



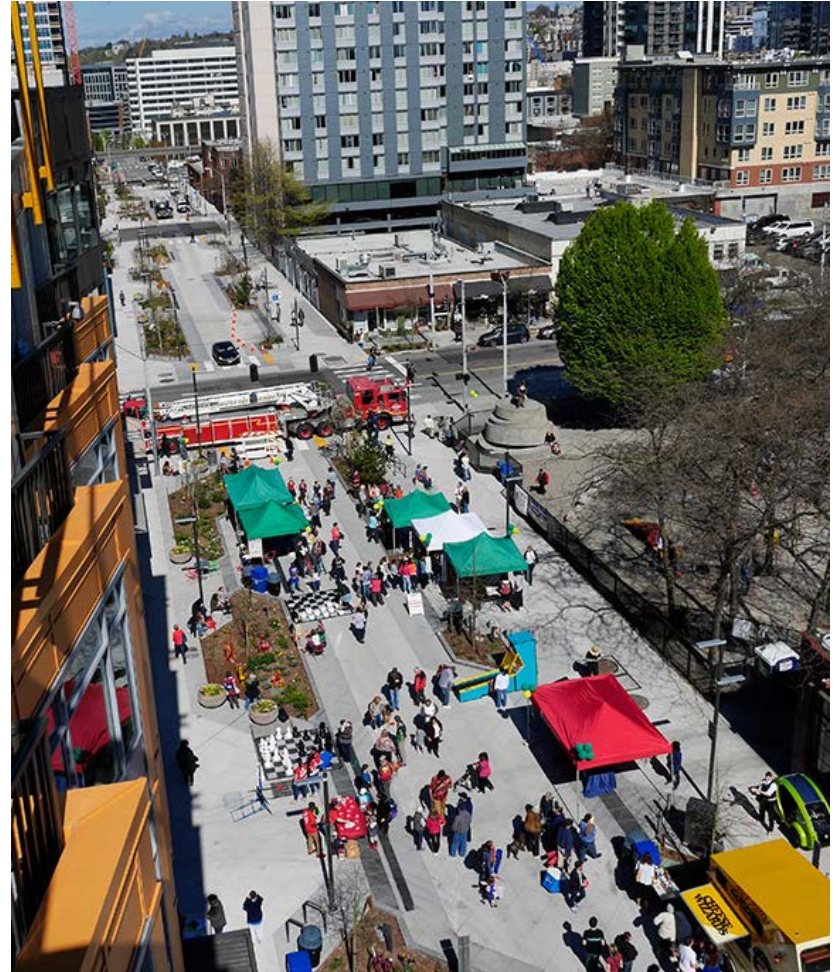
Tweaks along the way



2nd Ave today



Bell St. Boulevard



Amazon gives a push to biking downtown

Originally published August 16, 2013 at 9:12 am | *Updated August 16, 2013 at 7:18 pm*



Questions?

scott.kubly@seattle.gov | (206) 684-5000

www.seattle.gov/transportation

