



Insurance Institute for Highway Safety
Highway Loss Data Institute

U.S. pedestrian crash picture: Trends and factors

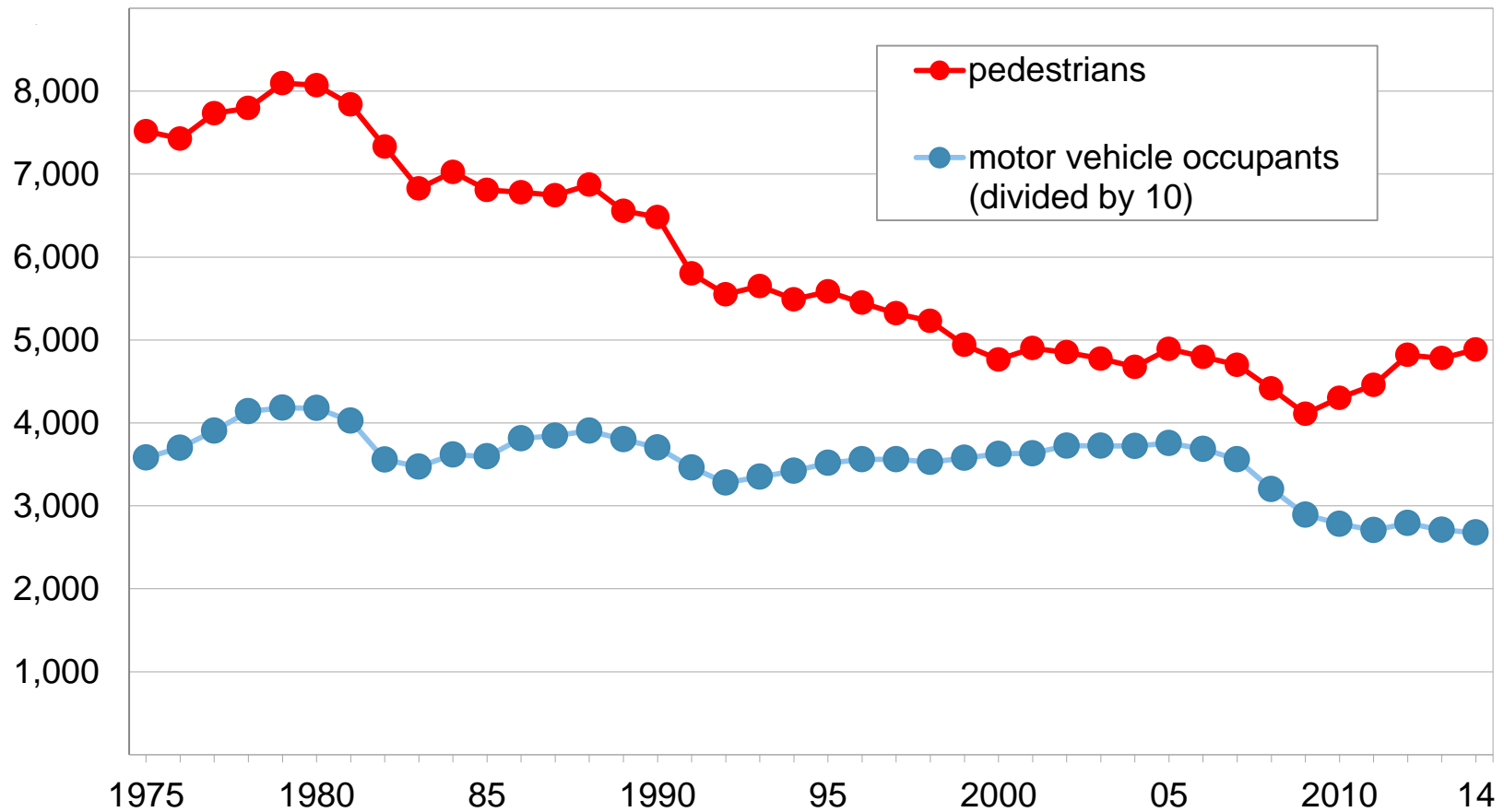
NTSB Pedestrian Forum
May 10, 2016

Jessica Cicchino

iihs.org

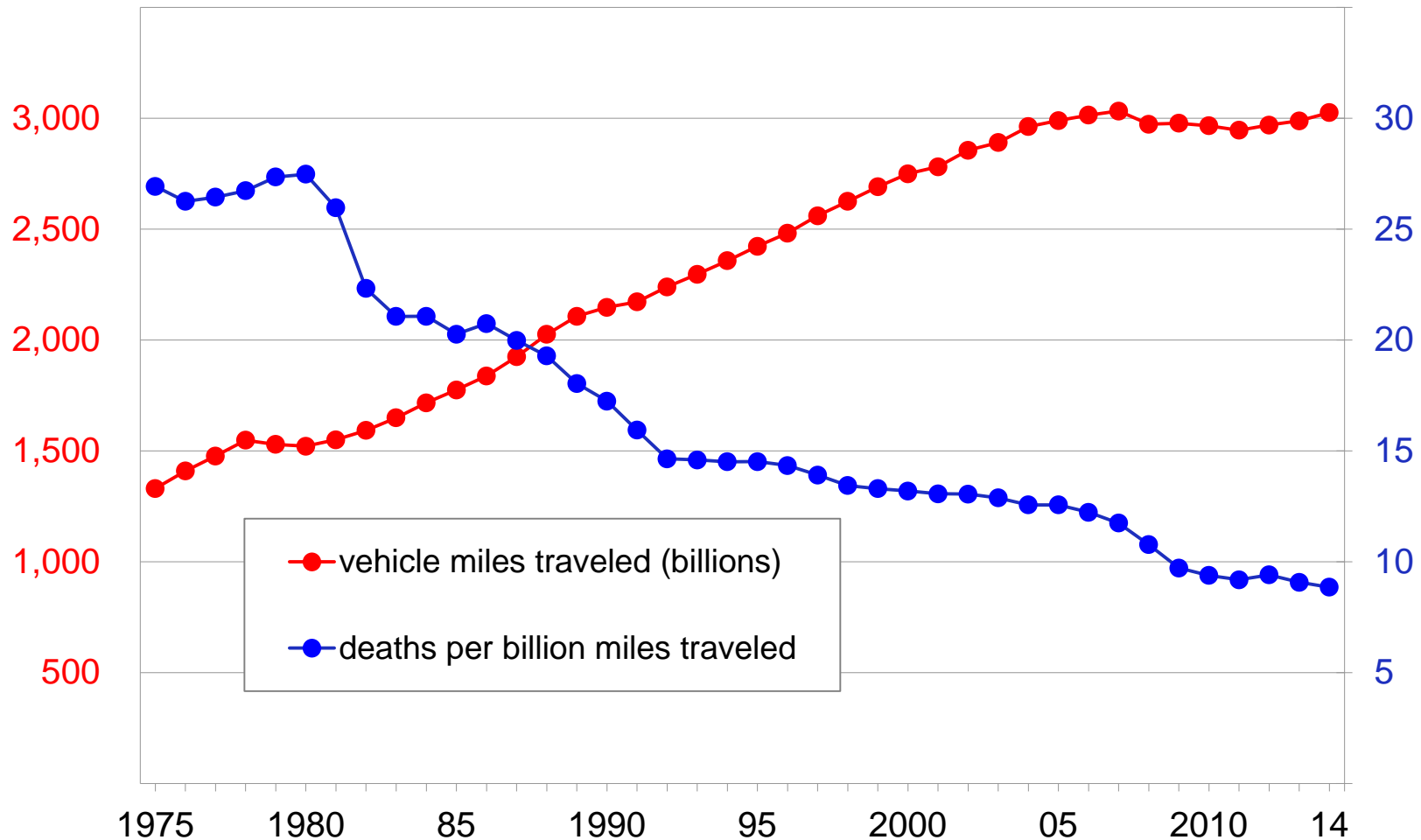
Pedestrian and motor vehicle occupant deaths

1975-2014



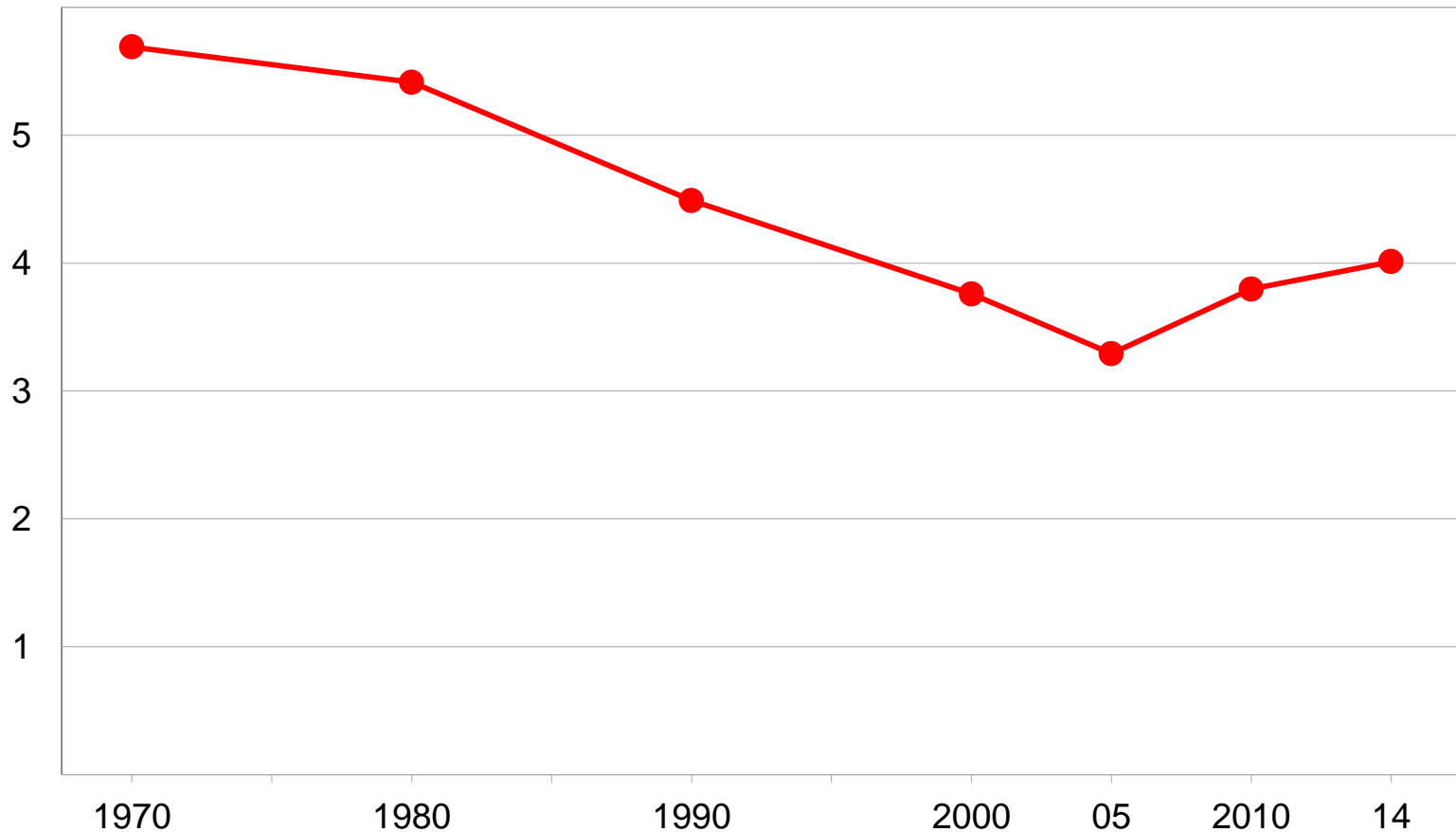
Vehicle miles traveled and motor vehicle occupant deaths per billion VMT

1975-2014



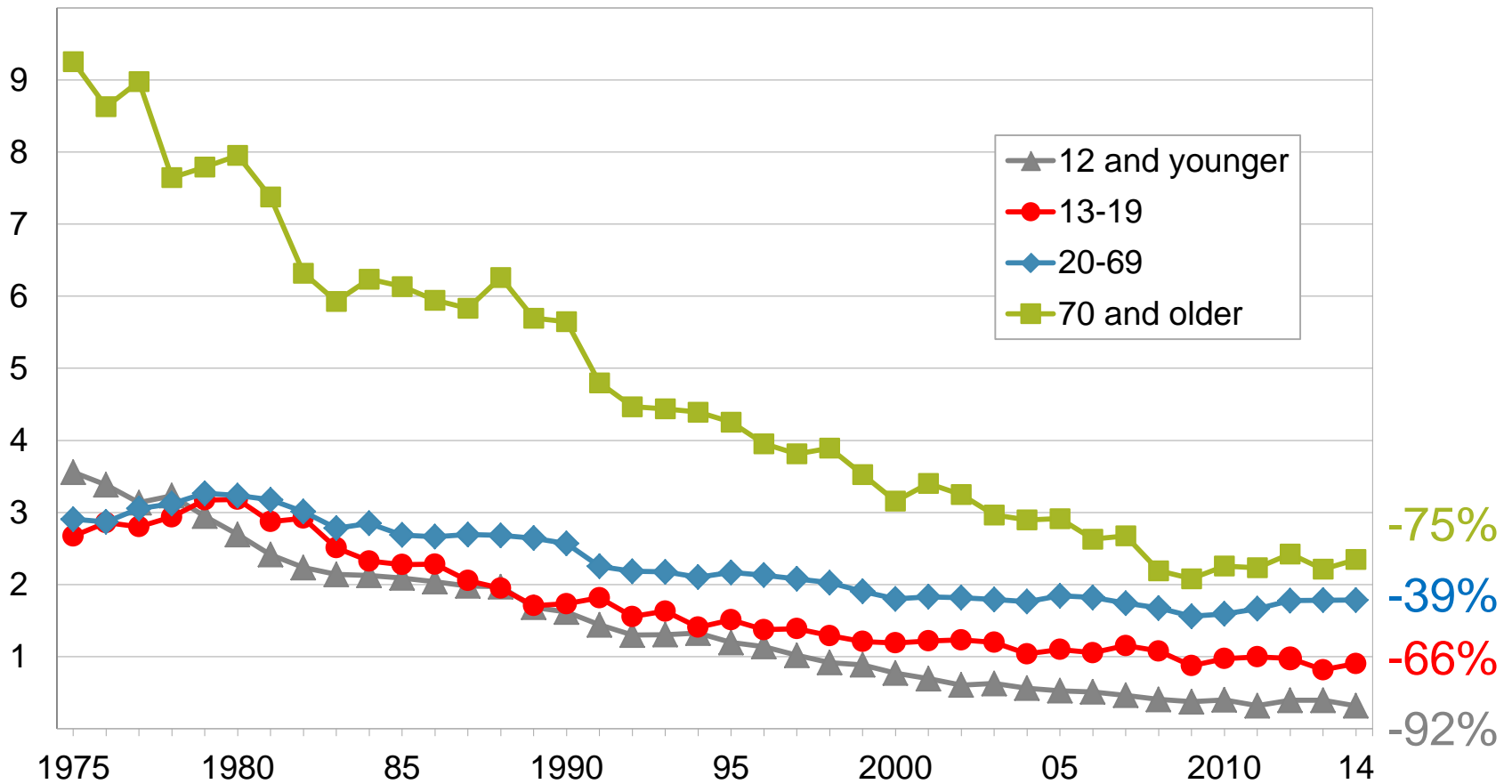
Number of people age 16 and older who walk to work (millions)

1970-2014



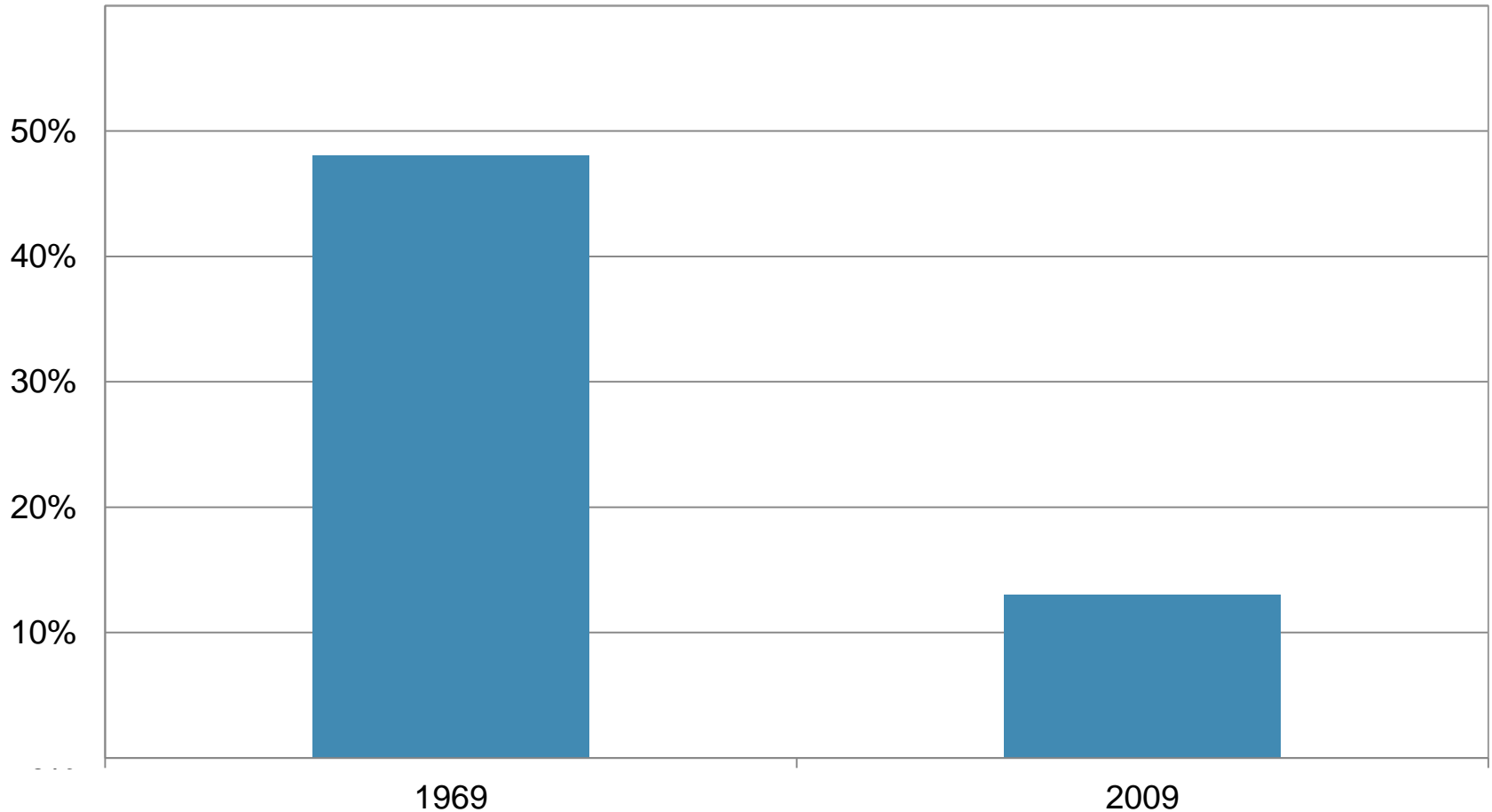
Pedestrian fatality rates per 100,000 population by age

1975-2014



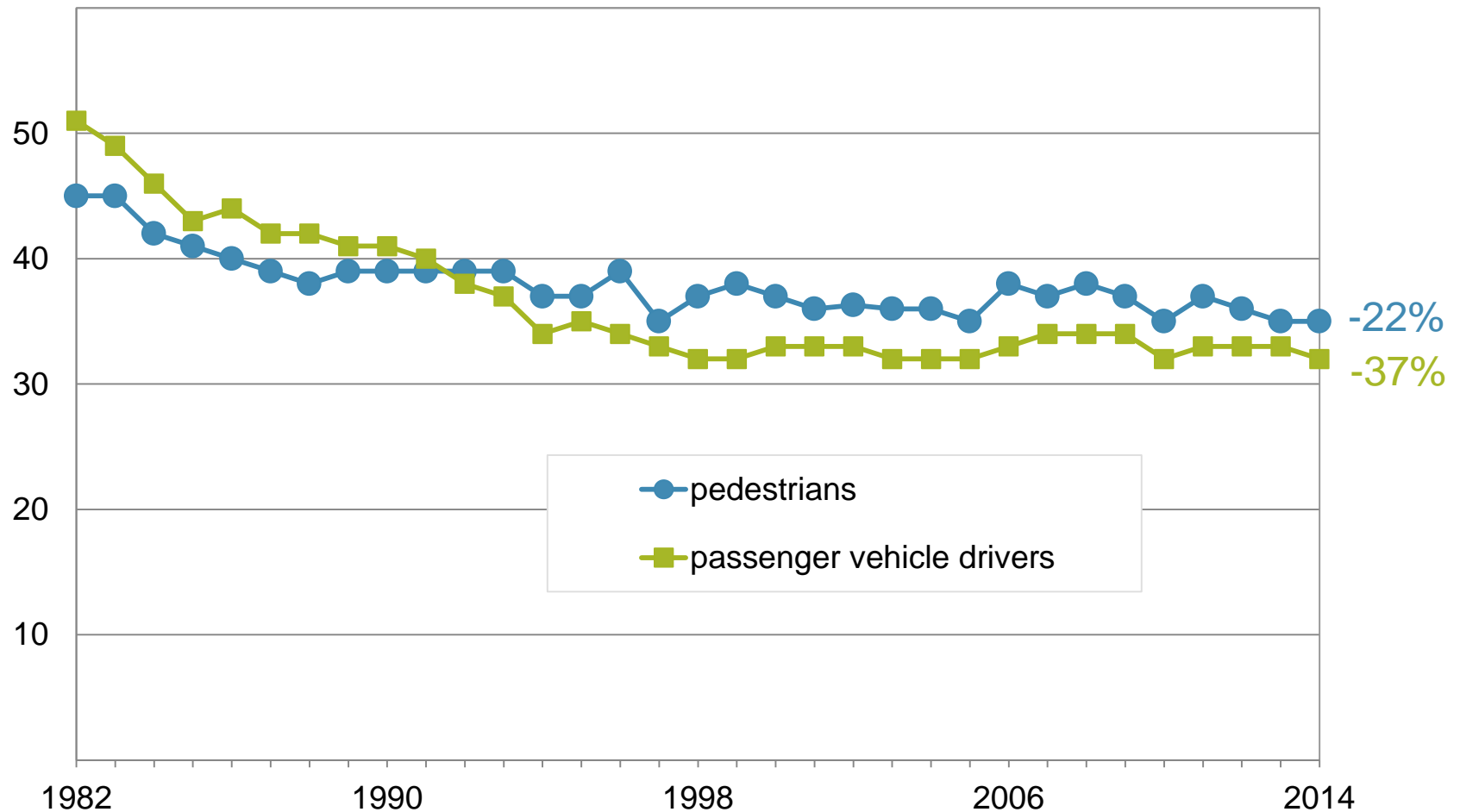
Percent of children in grades K-8 who usually walk or bike to school, 1969 and 2009

National Center for Safe Routes to School, 2011



Percent of fatally injured pedestrians and drivers ages 16 and older with BACs $\geq 0.08\%$

1982-2014



Percent of fatally injured pedestrians and drivers ages 16 and older with BACs $\geq 0.08\%$, by age

2010-2014

	pedestrians	passenger vehicle drivers
16-20	25	26
21-29	47	48
30-39	46	45
40-49	49	40
50-59	43	30
60 and older	14	11

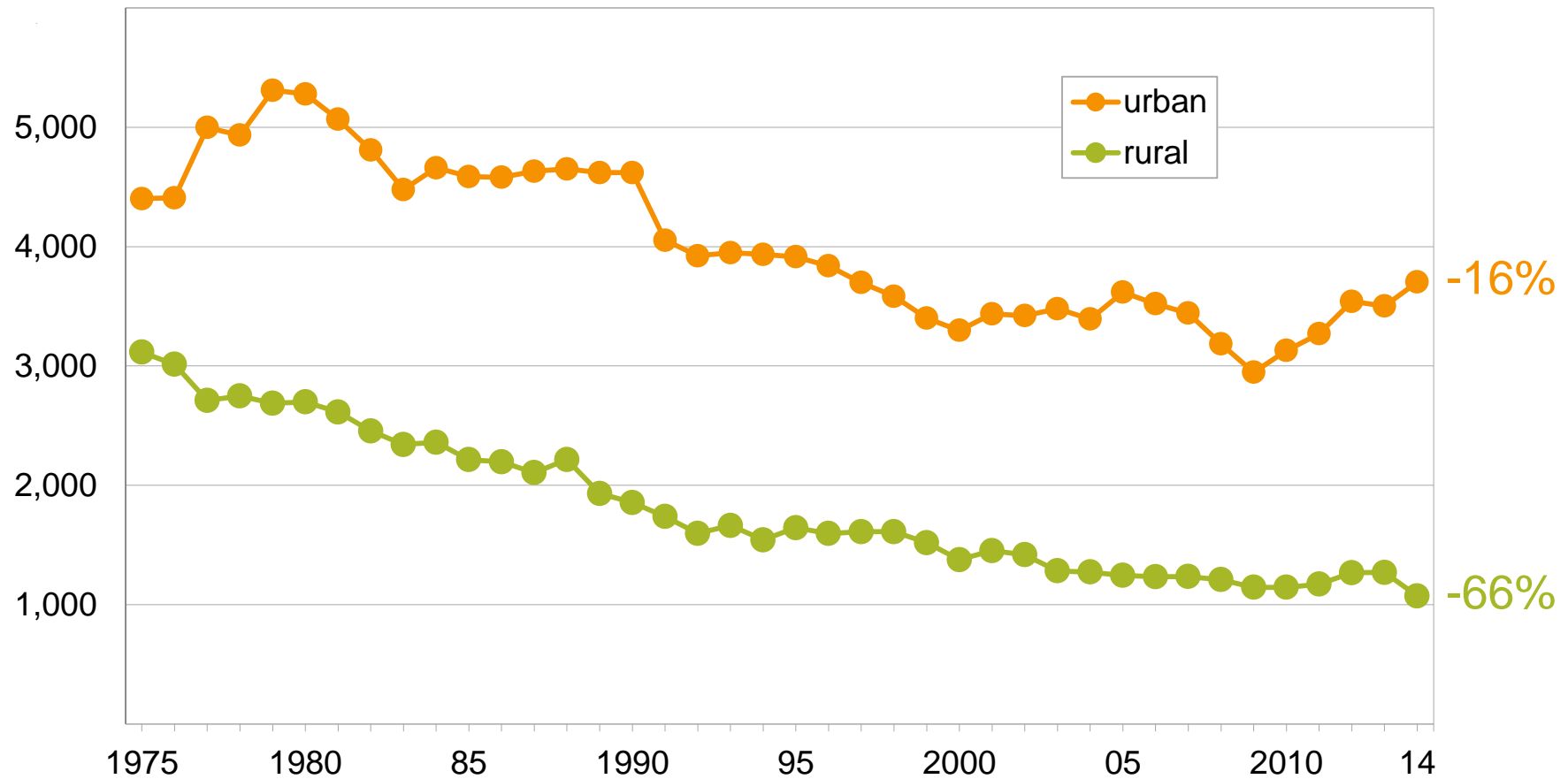
When pedestrian crashes occur (percent)

2010-2014

	non-fatal	fatal
dawn, dusk, or dark	42	75
October, November, or December	31	32

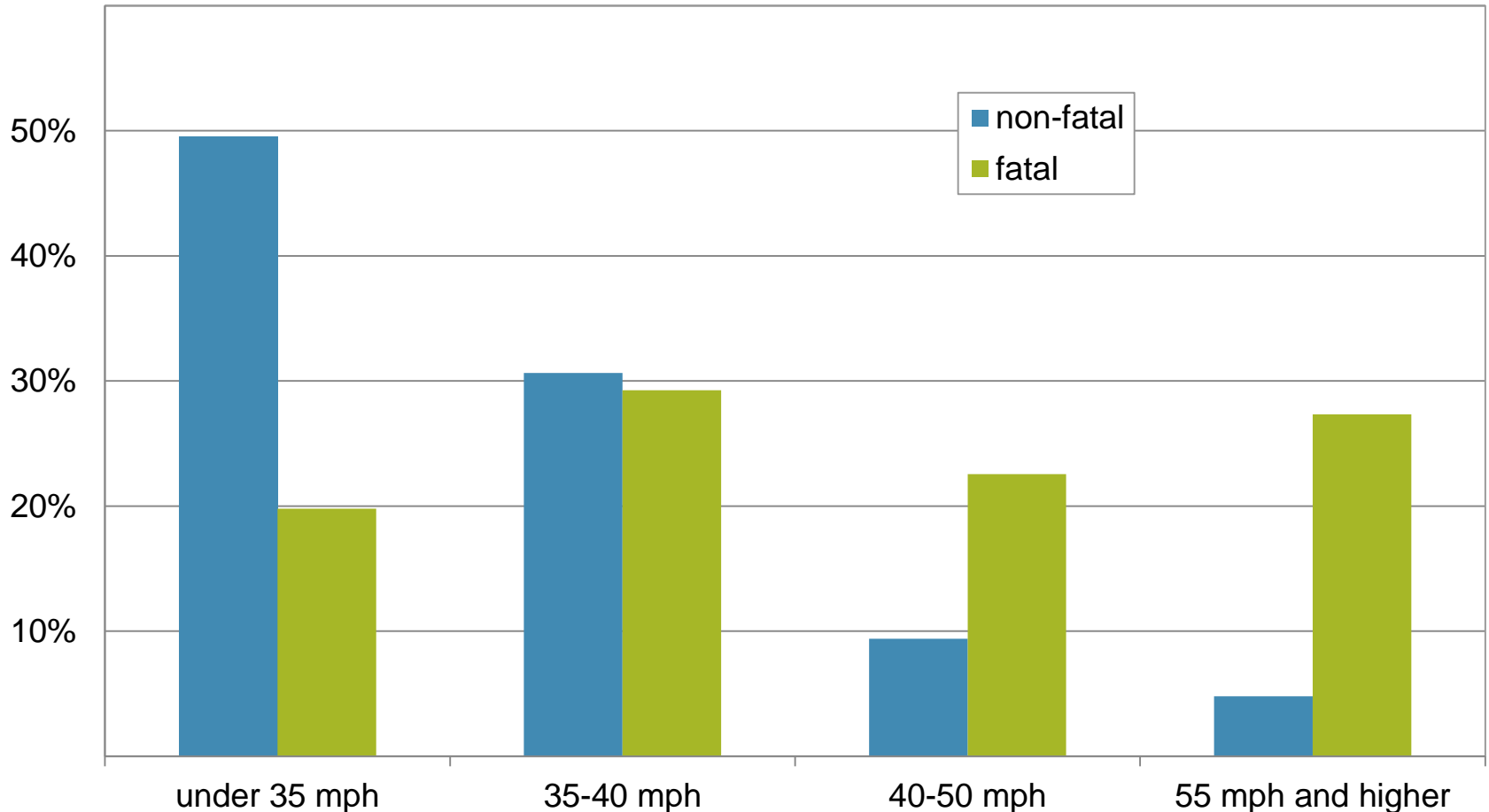
Pedestrian deaths by urban or rural road type

1975-2014



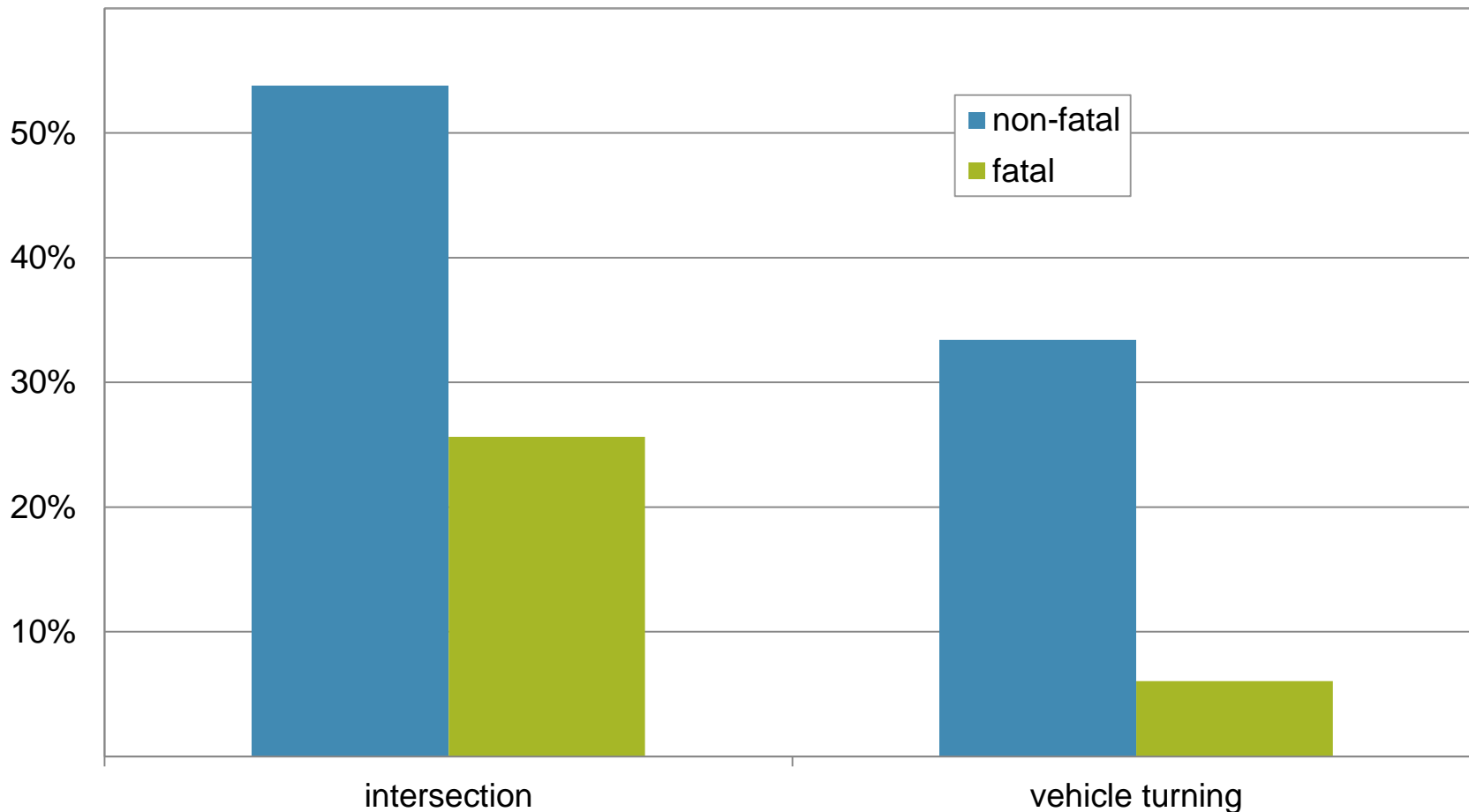
Percent of pedestrians involved in non-fatal and fatal crashes by speed limit

2010-2014



Percent of pedestrians involved in non-fatal and fatal crashes at intersections and with turning vehicles

2010-2014



Data gaps

- ▶ Driver and pedestrian behavior immediately prior to crash
 - Naturalistic and in-depth crash studies tend to not focus on pedestrian crashes
- ▶ Details of crash circumstances
- ▶ Linking crash data to information on pedestrian facilities
- ▶ Crashes typically not captured in police-reported databases
 - off public roadway
 - with road users other than motor vehicles (e.g., bicyclists)
- ▶ Exposure collected regularly, by characteristics of interest
- ▶ Objective measures of exposure
 - National Household Travel Survey and Census are self-report



Insurance Institute for Highway Safety
Highway Loss Data Institute

More information and links
to our YouTube channel
and Twitter feed at iihs.org

Jessica Cicchino, Ph.D.
Vice President, Research
jcicchino@iihs.org

iihs.org