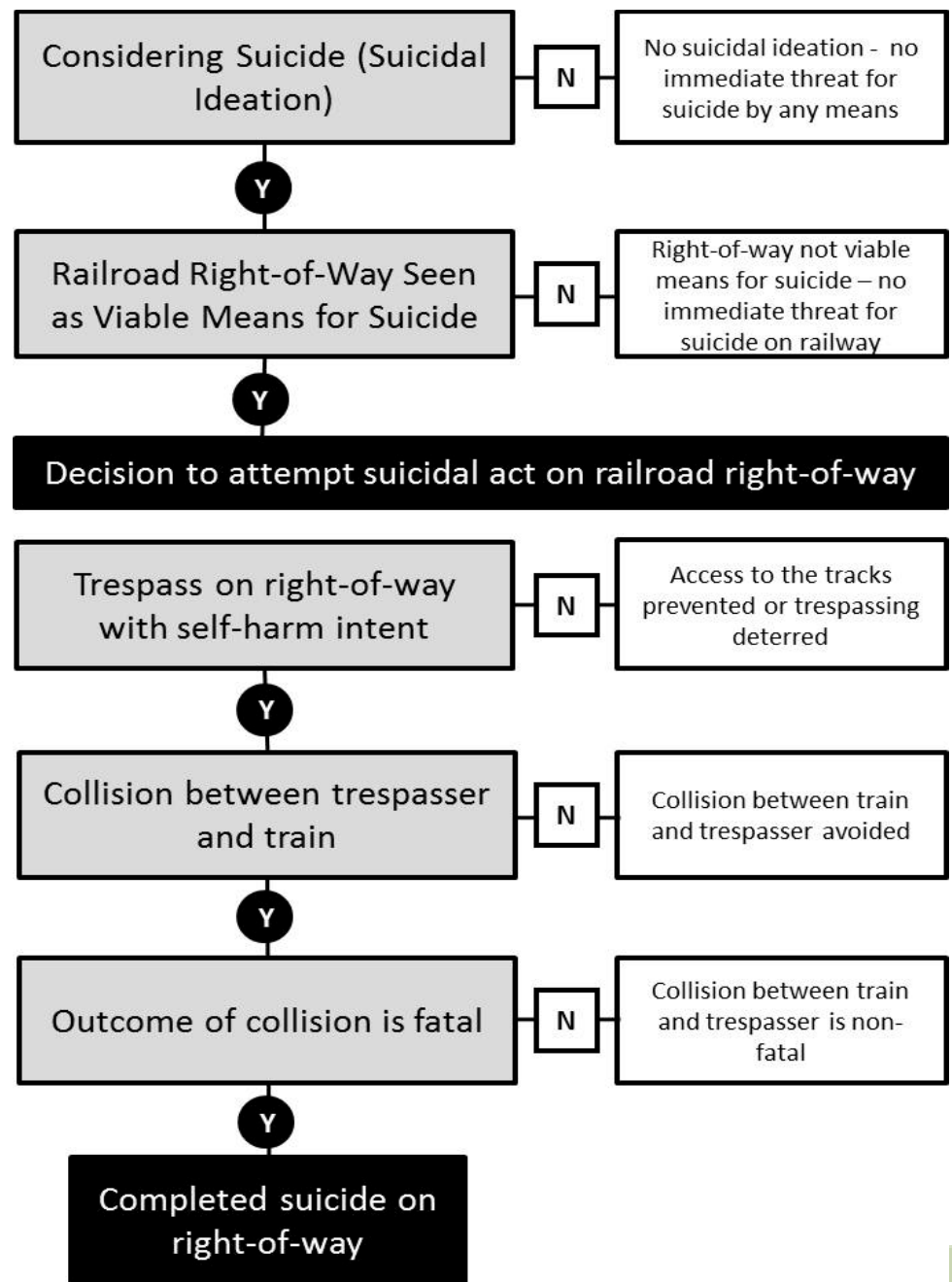


Overview

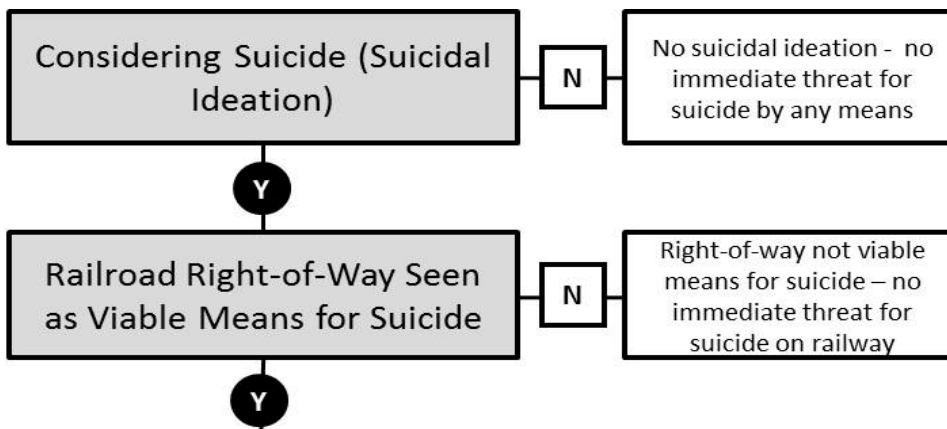
- ❑ Types of trespass casualties
 - Accidental – Intent of the trespasser is to safely cross or walk along the tracks, however, they misjudge or are unaware of the oncoming train.
 - Intentional – Intent of the trespasser is to be struck and killed by the train; a suicide or suicide attempt.
- ❑ Trespassing on the right-of-way is illegal regardless of intent
- ❑ *Both* types of trespassing must be considered to develop effective countermeasures

Potential Countermeasures to Mitigate Suicides on Rights-of-Way

- ❑ Our team recently published a paper describing proposed countermeasures to mitigate suicides on the rights-of-way*
- ❑ Not all proposed countermeasures are recommended or likely to be effective
- ❑ Diagram presents points of intervention where countermeasures may be implemented

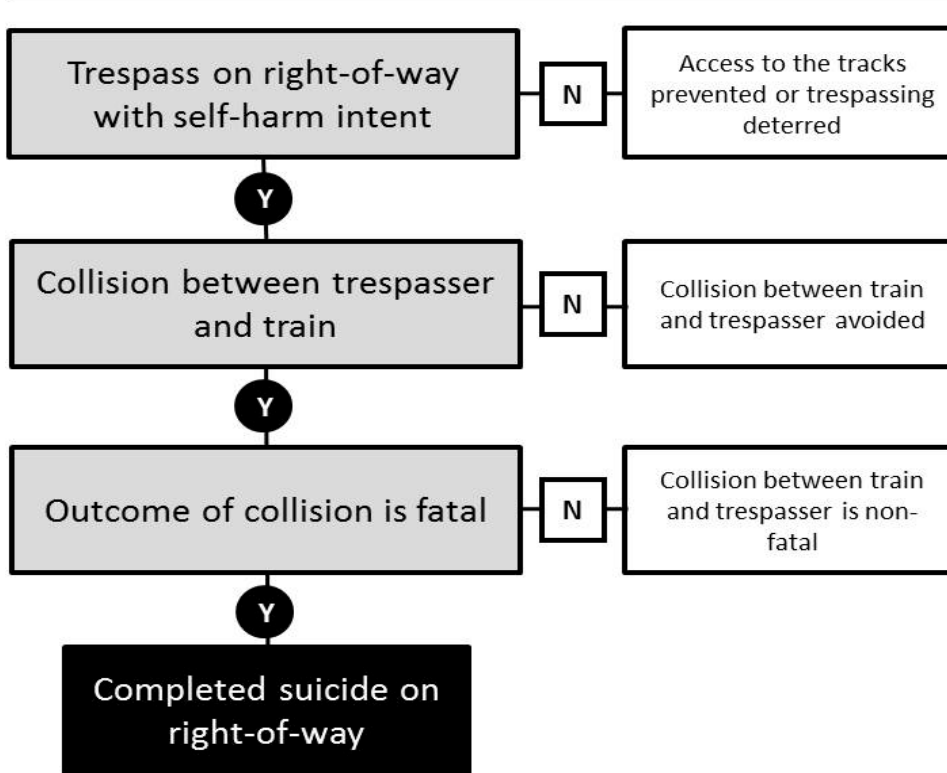


Intentional

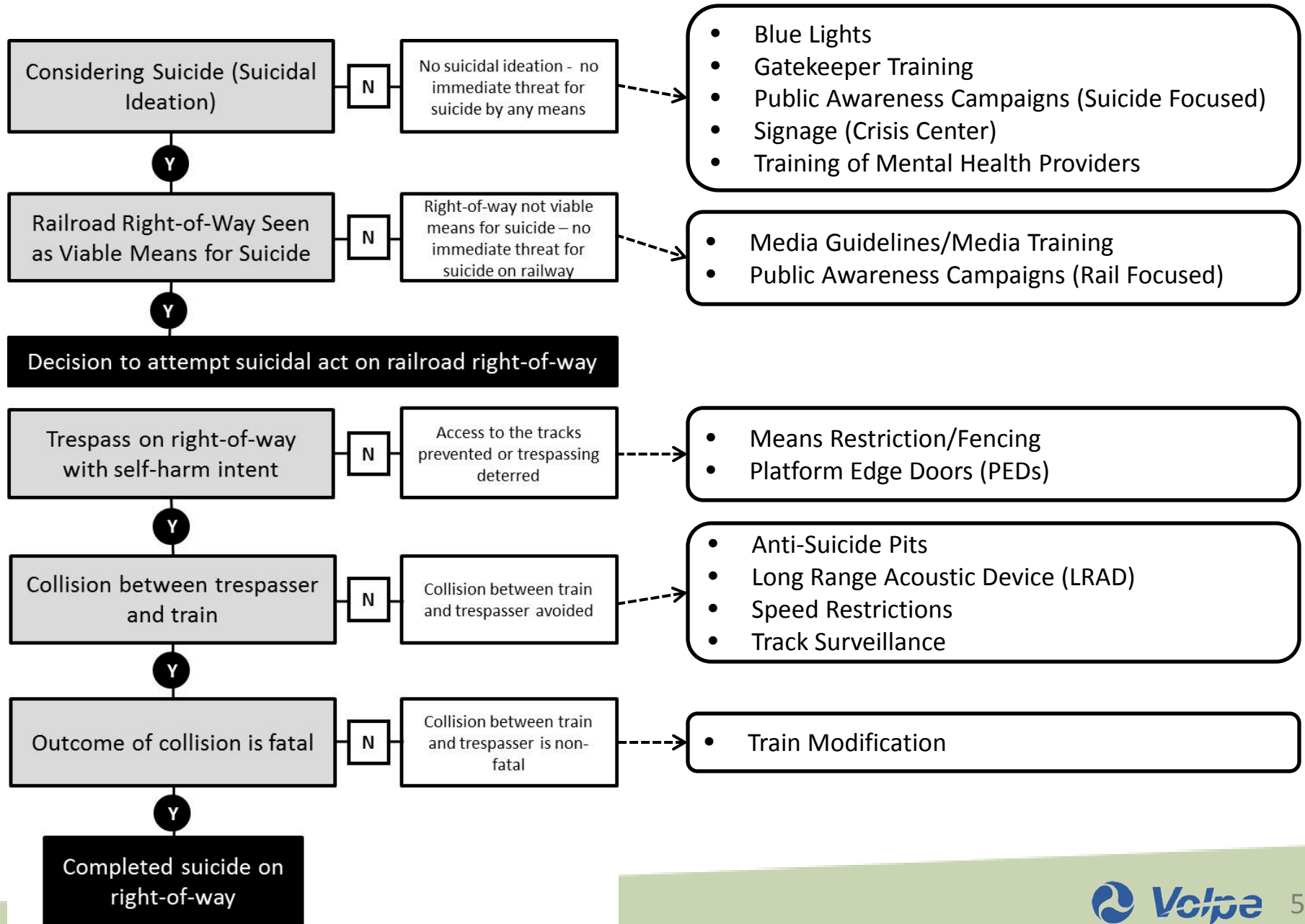


Decision to attempt suicidal act on railroad right-of-way

Intentional
or
Accidental



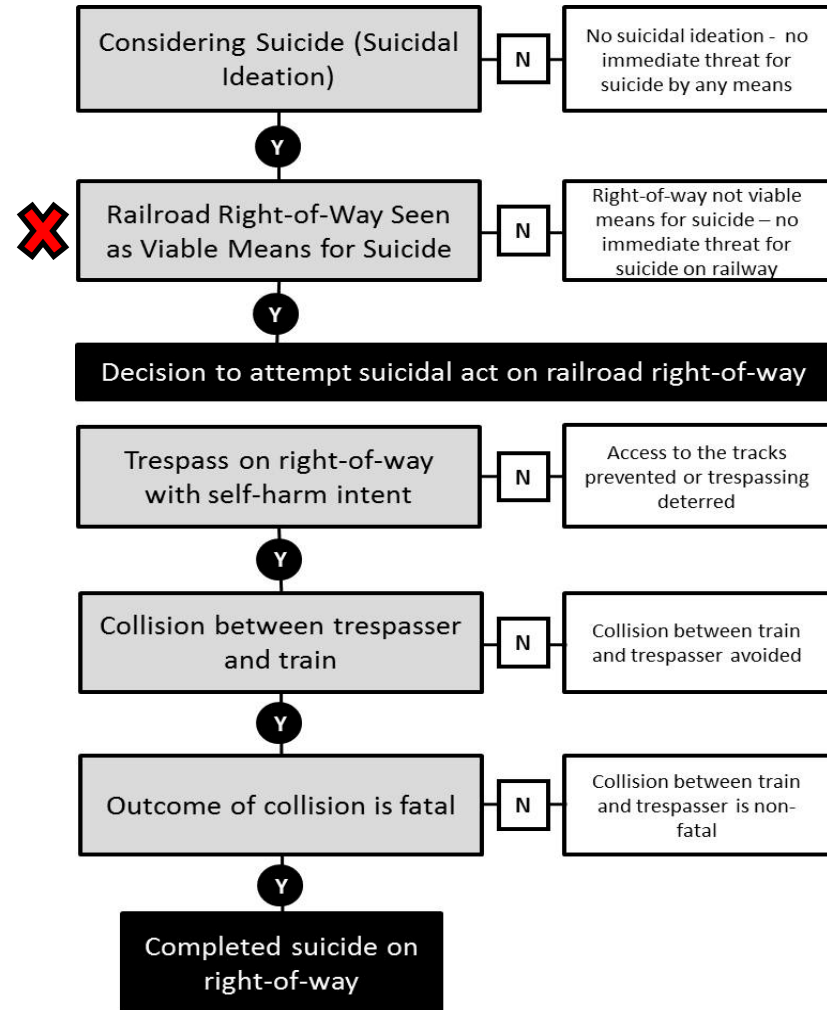
Points of Intervention – Proposed Countermeasures



Public Awareness Campaigns (Railroad Focused)

Such campaigns are used widely around the world and in the US. True impact is not well understood.

Potential for unintended increase in suicide if not phrased carefully (e.g., inadvertent advertising of a means of suicide)



Means Restriction/Fencing

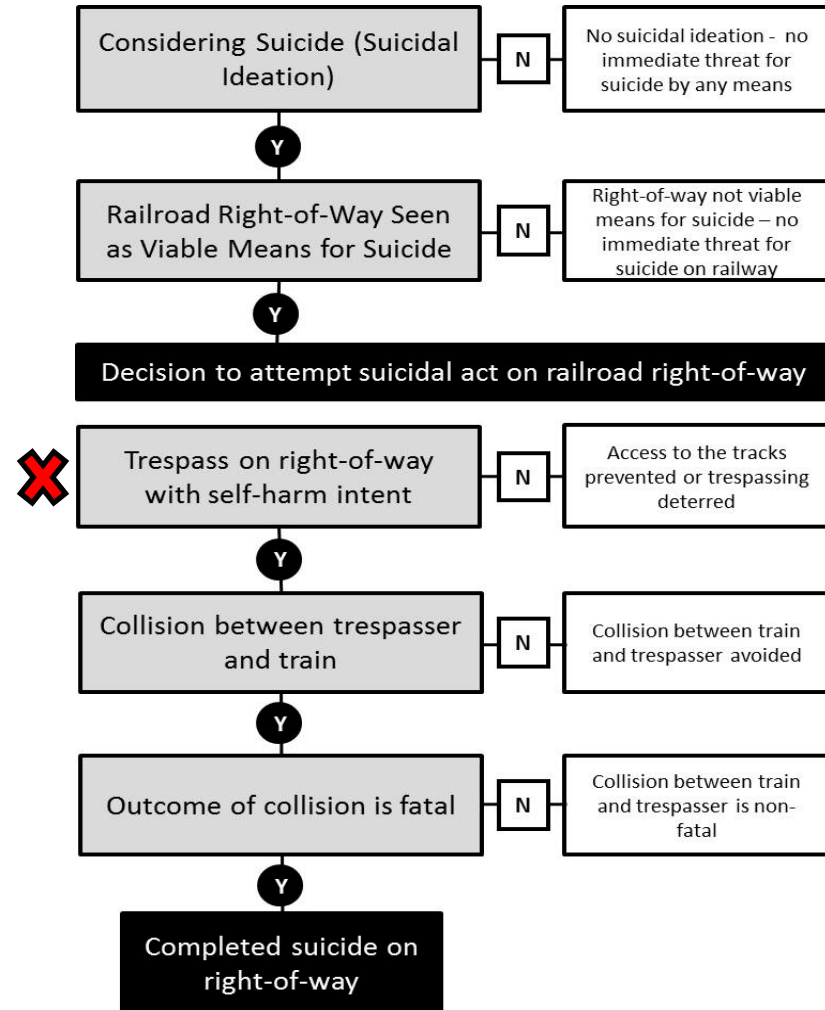
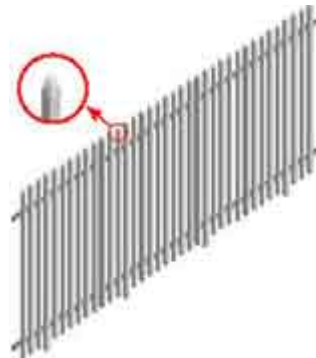
Used throughout the railroad community around the world.



Exact impact is not well documented.



Both maintenance and installation costs should be considered.



Summary

- ❑ Many countermeasures have been proposed to mitigate trespass casualties, but little evidence of true impact
 - More research is needed to evaluate the effectiveness of proposed countermeasures

- ❑ Current lack of confidence in the differentiation between two types of trespass
 - Further refine tools to determine cause of death and fill other known data gaps

- ❑ Countermeasures cannot distinguish the intent of the trespasser, so both intentional and accidental must be considered
 - Be aware of unintended consequences, for example how a focus on lethality may impact suicides



U.S. Department
of Transportation
Federal Railroad
Administration



OFFICE OF RESEARCH & DEVELOPMENT

Thank you!

Thanks to Our Team

- ❑ **Sponsors (FRA)**
 - Michael Coplen, FRA Office of Research and Development
 - Starr Kidda, FRA Office of Research and Development
- ❑ **Volpe Center**
 - Stephanie Chase, Ph.D.
 - Bianka Mejia
 - Cassandra Cantu
 - Danielle Hiltunen
- ❑ **Association of American Railroads**
 - Michael Martino
- ❑ **George Washington University**
 - Ann Doucette, Ph.D.



Scott H. Gabree, Ph.D.

Engineering Psychologist | Surface Transportation Human Factors

Volpe, The National Transportation Systems Center | U.S. Department of Transportation

55 Broadway, Cambridge MA 02142 | Web: www.volpe.dot.gov

Office: 617-494-2530 | Email: scott.gabree@dot.gov